

WATER MANAGEMENT / SINGLE-WALL

GOLDLINE®

Goldline® is a soil-tight, high density polyethylene plastic pipe that is an essential component of agricultural water management systems. It is available in mini rolls, maxi coils and sticks measuring 10' or 20'. Goldline is also available in perforated or non-perforated configurations and can be supplied with high performance geotextile fabric.

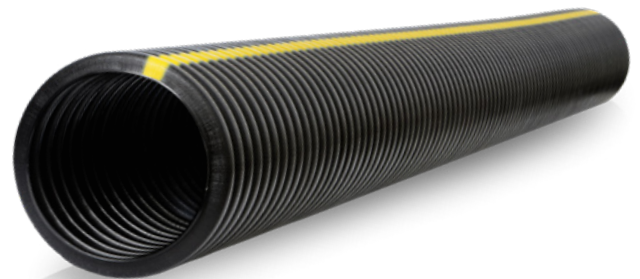
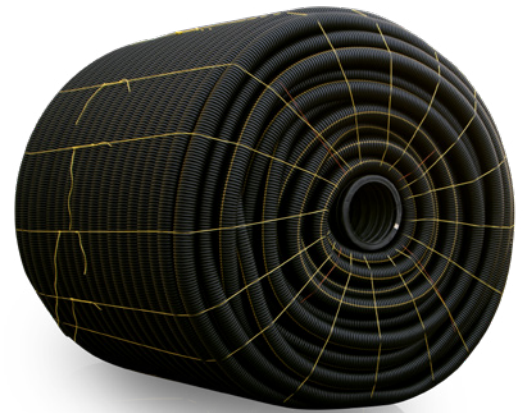
Features & Benefits

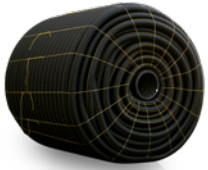
- Lightweight and easy to maneuver for efficient installation
- Meets or exceeds ASTM F667 requirements
- Available in AASHTO grade to meet or exceed AASHTO M252 or M294 requirements
- HDPE material is completely resistant to rusting, corrosion, and deterioration
- Available in perforated and non-perforated configurations
- Available in coils or sticks

Applications

- Culverts
- Highway Drains
- Leachbeds
- Building & Construction Drains
- Containment Pipe
- Soil Stabilization
- Conduit

* Contact your Prinsco representative regarding application suitability questions.





GOLDLINE® single-wall coils

	Diameter(s)	Standard Length (ft.)	Material
Perforated	2" - 15"	100' - 5300'	High Density Polyethylene (HDPE)
Non-Perforated	2" - 15"	100' - 5300'	High Density Polyethylene (HDPE)
with Knitted Polyester Wrap <i>Geotextile fabric specifications are available upon request.</i>	3" - 15"	100' - 5300' <i>(Special Order Items.)</i>	High Density Polyethylene (HDPE)
Leachbed <i>Has 3 rows of holes on the bottom of the pipe.</i>	4"	100', 250'	High Density Polyethylene (HDPE)
Muck Pipe <i>Has 3 rows of large-diameter holes at intervals of 120°.</i>	4" - 6"	100' - 3000'	High Density Polyethylene (HDPE)
Narrow Slot Pipe*	3" - 15"	100' - 3000'	High Density Polyethylene (HDPE)

* Not intended to replace sock or fabric around pipe; provided as a service to our customers without any implied warranties.

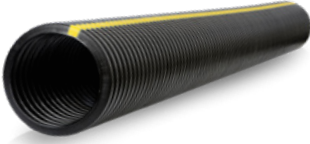
† Couplers sold separately.



Coil Wrap Chart

	Pipe Sizes (diameter)							
	3"	4"	5"	6"	8"	10"	12"	15"
1	150'	135'	100'	90'	93'	80'	90'	75'
2	330'	290'	250'	220'	230'	200'	195'	150'
3	550'	490'	440'	387'	385'	350'	320'	
4	825'	730'	670'	592'	595'	525'		
5	1120'	1000'	940'	834'	825'			
6	1480'	1315'	1250'	1107'				
7	1870'	1685'	1600'	1450'				
8	2305'	2065'	1900'					
9	2780'	2500'	2300'					
10	3290'	3000'						
11	3860'							
12	4400'							
13	5300'							

Feet



GOLDLINE® single-wall sticks

	Diameter(s)	Standard Length (ft.)	Material
Perforated	3" - 15"	10', 20'	High Density Polyethylene (HDPE)
Non-Perforated	3" - 15"	10', 20'	High Density Polyethylene (HDPE)
Non-Perforated Lock-Fast Coupler	8" - 15"	10'	High Density Polyethylene (HDPE)
with Knitted Polyester Wrap <i>Geotextile fabric specifications are available upon request.</i>	8" - 15"	20' <i>(Special Order Items.)</i>	High Density Polyethylene (HDPE)

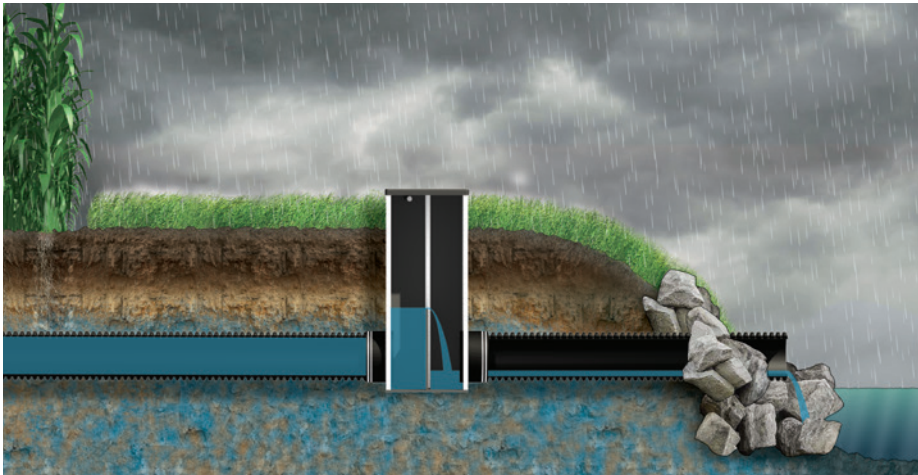


Geotextile Sock

Goldline® with geotextile sock is great for projects involving fine sand, soil or flowable particles of soil. It comes with a knitted polyester continuous seamless sleeve.

Fabric should not be used when installing in heavy soils (such as clay or loam) because it may inhibit water from entering the pipe.

Water Level Control Structures



For water table management systems:

- Controlled Drainage
- Subsurface Irrigation
- Conserve Water
- Increase Yields
- Reduce Nutrient Loss
- Decrease Soil Loss

Flow Chart Full Flow Capacity GPM | Slope (ft./100 ft.)

single-wall PE pipe : Manning's "n"

3" - 6" = 0.015 8" = 0.016 10" = 0.017 12" - 15" = 0.018

Hydraulic Slope: Feet Per Hundred Feet

Diameter	0.02	0.05	0.10	0.20	0.50	1.0	2.0	5.0	10.0	20.0
3"	5	7.7	11	15	24	34	49	77	109	154
4"	11	17	23	33	52	74	105	166	234	331
5"	19	30	42	60	95	134	190	300	425	600
6"	31	49	69	98	154	218	309	488	690	976
8"	62	99	139	197	312	441	623	985	1,394	1,971
10"	106	168	238	336	532	752	1,064	1,682	2,378	3,363
12"	163	258	365	516	817	1,155	1,633	2,582	3,652	5,165
15"	296	468	662	937	1,481	2,094	2,961	4,682	6,622	9,365

To determine CFS, divide values in chart by 448.8 $Q = 448.8 k S^{1/2}$ Q = Pipe Capacity, gpm S = Slope, Ft/Ft k = Conveyance Factor

Approximate Pipe Requirements

Spacing	ft/ac
20	2180
30	1450
40	1089
50	870
60	725
70	620
80	545
90	485
100	435
110	395
120	360
130	335
140	310
150	290
160	270
180	240
200	220
250	175

Dimensions, Weights and Strength

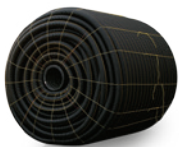
Nominal ID (inches)	Approx. OD (inches)	Stick Length (feet)	Micro Roll (feet)	Mini Roll (feet)	Maxi Roll (feet)	Corrugation Pitch (inches)	Nominal Flow Area (sq in)	Approx. Wt./Ft. (lbs)
3"	3.6	-----	100	300	5,300	0.67	7.1	0.2
4"	4.7	20/10	100	250	3,000	0.67	12.6	0.3
5"	5.8	-----	-----	165	2,300	0.67	19.6	0.5
6"	7.0	20	100	575	1,450	0.80	28.3	0.7
8"	9.2	20	-----	390	825	1.00	50.3	1.3
10"	11.7	20	-----	-----	525	1.30	78.5	1.8
12"	14.5	20	-----	-----	320	2.00	113.1	3.0
15"	17.9	20	-----	-----	150	2.70	176.7	4.3

More about Goldline®

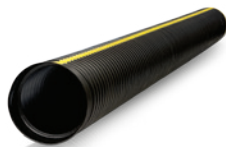
- Installation Videos
- Installation Documents
- Specifications
- Technical Notes



Prinsco products are fully supported by our engineering team and are designed, manufactured and tested to meet/exceed the high performance needs of the construction market. Prinsco's engineering, quality control and production teams are committed to a continuous process of innovation and product development. We are focused on current and future market needs centered around environmental sustainability, water quality, stormwater management and performance advancement.



GOLDLINE®



GOLDFLO®
DUAL-WALL STICKS



GOLDFLEX®



FITTINGS



CONTROLLED DRAINAGE