





Prinsco is built on core values and focused on the future of water management. Our products are designed, manufactured and tested to meet the high-performance needs of today's stormwater market. We offer a full portfolio of premium products that create engineered solutions for all types of projects and needs around stormwater collection, conveyance, treatment, and storage.

Just as important, is our promise to provide the highest level of customer service in the industry. That includes a highly responsive sales team, a full-service engineering support team and a committed manufacturing team that keeps the customer needs in mind at all times. Contact Prinsco for more information.

Corporate Headquarters

1717 16th Street NE
Willmar, MN 56201

Phone: 320.222.6800
Toll Free: 800.992.1725
Fax: 320.222.6820

prinsco.com



STORMWATER SOLUTIONS / COLLECTION & CONVEYANCE

ECOFLO® 100 - Product Information 4

GOLDFLO® - Product Information 6

GOLDFLO WT® - Product Information 7

GOLDLINE® - Product Information 10

GOLDPRO STORM® - Product Information 12

STORMWATER SOLUTIONS / STORAGE

Retention | Detention Solutions 14

Pipe Systems - Product Information 15

HydroStor® - Product Information 18

STORMWATER SOLUTIONS / TREATMENT

Stormwater Quality Unit - Product Information 20

ACCESSORIES

GOLDFLO WT® / GOLDFLO® / ECOFLO®100 / GOLDPRO STORM® 22 - 27

GOLDLINE® 28 - 29

RESOURCES

Installation Resources 30

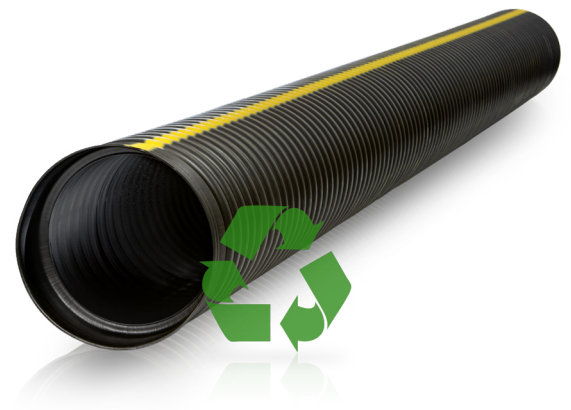
Truckload Quantities 31



ECOFLO® 100

STORMWATER SOLUTIONS / COLLECTION & CONVEYANCE / DUAL-WALL

ECOFLO®100 is an industry first: a high density polyethylene pipe containing a minimum of 40% recycled HDPE and engineered to provide a 100 year service life. It offers material performance exceeding the requirements of AASHTO M294 or ASTM F2306, and is the ideal choice for high-volume watertight gravity-flow drainage applications where an environmentally conscious product is in demand.



Available Sizes

Diameter (in.)	Number	Nominal Length (ft.)
4"	4EF20NP	20'
6"	6EF20NP	20'
8"	8EF20NP	20'
10"	10EF20NP	20'
12"	12EF20NP	10'/20'
15"	15EF20NP	10'/20'
18"	18EF20NP	10'/20'
24"	24EF20NP	10'/20'
30"	30EF20NP	10'/20'
36"	36EF20NP	10'/20'
42"	42EF20NP	10'/20'
48"	48EF20NP	10'/20'
60"	60EF20NP	10'/20'

Some sizes may be special order. Available perforated.

Industry Standards

ECOFLO®100 pipe meets the following:

- **ASTM F2306:** Standard Specification for 12" - 60" (300 - 1500 mm) Annular Corrugated Profile-Wall Polyethylene (PE) Pipe and Fittings for Gravity-Flow Storm Sewer and Subsurface Drainage Applications*
- **AASHTO M294:** Standard Specification for Corrugated Polyethylene Pipe, 300 - 1500 mm Diameter*
- **ASTM F477:** Standard Specification for Elastomeric Seals (Gaskets) for Joining Plastic Pipe
- **ASTM D3212:** Standard Specification for Joints for Drain and Sewer Plastic Pipes Using Flexible Elastomeric Seals

*ECOFLO® 100 meets the material and finished product performance requirements of this standard but is manufactured with a minimum of 40% recycled content.

Material Performance

ECOFLO®100 is engineered using a proprietary resin blending technology to ensure premium stress crack resistance (SCR). In fact, independent tests have verified that ECOFLO 100’s material performance vastly exceeds the requirements of AASHTO M294. That’s remarkable considering that ECOFLO 100 is made from partially recycled content.

Service Life

ECOFLO 100 has been independently tested and verified to meet the rigorous 100 year service life protocol — an unprecedented standard for green-friendly pipe. That is made possible, in part, by our proprietary antioxidant package, which effectively erases the cycle history of our recycled blend and eliminates the chance for chemical degradation.

Structural Performance

ECOFLO100 is a corrugated dual-wall pipe made from high density polyethylene (HDPE), which is proven to provide the same level of long-term structural performance you have come to expect from traditional virgin AASHTO M294 pipe.

*See our ECOFLO100 Product Page and Resource Library at prinsco.com for complete details.

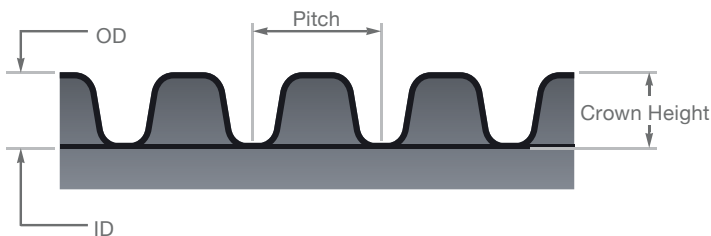
Applications*

- Storm Sewer
- Highway Drainage
- Parking Lot Drainage
- Stormwater Detention Systems
- Industrial Applications
- Ditch Enclosures

* Contact your Prinsco representative regarding application suitability questions



Dual-Wall Pipe Wall Cross



Mobile Resources



More about ECOFLO 100

- Installation Videos
- Installation Documents
- Specifications
- Technical Notes



Prinsco.com/ECOFLO100-resources

ECOFLO® 100 Accessories:
See pages 22-25



Green Fact:

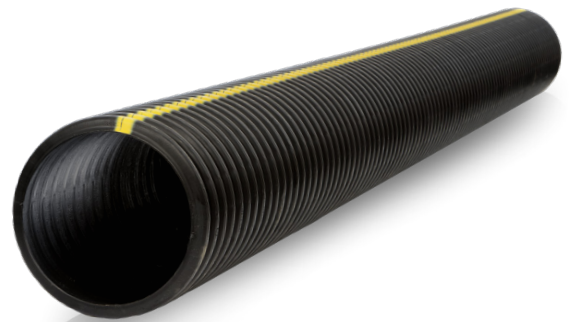
Over the last 10 years, Prinsco’s use of recycled materials has saved approximately 4 million barrels of oil and 2.1 million cubic yards of landfill space.

GOLDFLO®

STORMWATER SOLUTIONS / COLLECTION & CONVEYANCE / DUAL-WALL

Plain End Dual-Wall

GOLDFLO® is a high density polyethylene plastic pipe manufactured to the stringent requirements of AASHTO M294 and ASTM F2306, ensuring you receive a quality, high performance product. GOLDFLO® is available with a soil tight joint configuration in 4"- 36" and with a watertight joint configuration in 4"- 60" as GOLDFLO WT® (see next page).



Features & Benefits

- Manning’s “n” value of 0.012 allows for greater flow capacity and reduces sediment or debris build-up
- Full offering of standard and custom fittings to meet your specific needs and reduce field fabrication and costly structures
- Several joining options allow for quick and easy installation, reducing costs while increasing efficiency
- HDPE material is resistant to rusting, corrosion, and deterioration
- Lightweight and easy field manipulation saves time, labor, and allows for the use of smaller equipment while contributing to a safer working environment

Available Sizes

Diameter (in.)	Number	Nominal Length (ft)
4"	04GF20NP	20'
6"	06GF20NP	20'
8"	08GF20NP	20'
10"	10GF20NP	20'
12"	12GF20NP	20'
15"	15GF20NP	20'
18"	18GF20NP	20'
24"	24GF20NP	20'
30"	30GF20NP	20'
36"	36GF20NP	20'

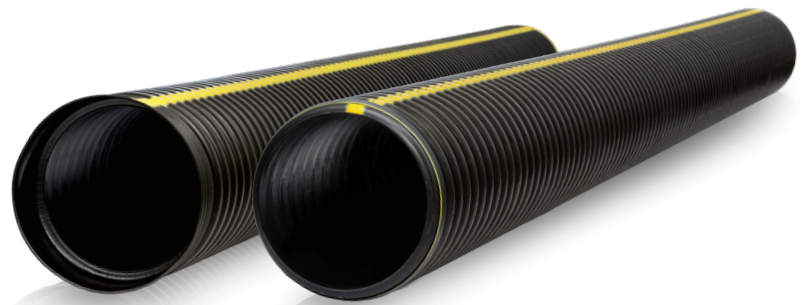
(Pipe is available perforated.)



GOLDFLO WT® STORMWATER SOLUTIONS / COLLECTION & CONVEYANCE / DUAL-WALL

Integrated Bell & Spigot Dual-Wall

GOLDFLO WT® provides unsurpassed performance for watertight stormwater conveyance and management. It is designed and manufactured with state-of-the-art methods ensuring maximum material performance and maximum structural performance.



Available Sizes

Diameter (in.)	Number	Nominal Length (ft.)
4"	04WT20NP	20'
6"	06WT20NP	20'
8"	08WT20NP	20'
10"	10WT20NP	20'
12"	12WT10NP/12WT20NP	10'/20'
15"	15WT10NP/15WT20NP	10'/20'
18"	18WT11NP/18WT20NP	10'/20'
24"	24WT11NP/24WT20NP	10'/20'
30"	30WT11NP/30WT20NP	10'/20'
36"	36WT11NP/36WT20NP	10'/20'
42"	42WT11NP/42WT20NP	10'/20'
48"	48WT11NP/48WT20NP	10'/20'
60"	60WT11NP/60WT20NP	10'/20'

(Pipe is available perforated.)

WT Features & Benefits

In addition to the features & benefits of plain end GOLDFLO®

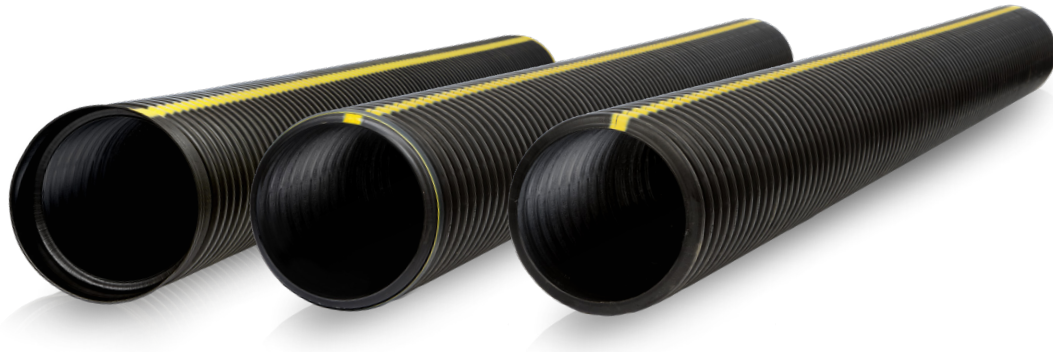
- Watertight integral bell and spigot coupling system allows for quick and easy installation, reducing costs and increasing efficiency
- Bell & spigot verified to ASTM D3212

GOLDFLO WT® Accessories:

See pages 22-25

GOLDFLO WT®
Integrated Bell & Spigot Dual-Wall

GOLDFLO®
Plain End Dual-Wall



GOLDFLO® and GOLDFLO WT® are manufactured to the most stringent requirements of AASHTO M294 or ASTM F2306, along with the ASTM D3212 watertight laboratory test requirements, making it ideal for projects where low cost, high installation efficiency, high product quality, and maximum watertight performance are critical.

Standards

GOLDFLO WT® & GOLDFLO® pipe meet the following:

- **ASTM F2306:** Standard Specification for 12" - 60" (300 - 1500 mm) Annular Corrugated Profile-Wall Polyethylene (PE) Pipe and Fittings for Gravity-Flow Storm Sewer and Subsurface Drainage Applications
- **AASHTO M252:** Standard Specification for Corrugated Polyethylene Drainage Pipe, 3" - 10" (75mm - 250mm) Diameter
- **AASHTO M294:** Standard Specification for Corrugated Polyethylene Pipe, 12" - 60" (300mm - 1500 mm) Diameter
- **ASTM F477:** Standard Specification for Elastomeric Seals (Gaskets) for Joining Plastic Pipe
- **ASTM D3212:** Standard Specification for Joints for Drain and Sewer Plastic Pipes using Flexible Elastomeric Seals

Dual-Wall Mobile Resources



More about Dual-Wall Pipe
Installation Videos
Installation Documents
Specifications
Technical Notes



[Prinsco.com/dualwall-resources](https://prinsco.com/dualwall-resources)

GOLDFLO® | GOLDFLO WT® | ECOFLO® 100

All Prinsco HDPE dual-wall pipe meet the following specifications.

Dimensions, Weights and Strength

Nominal ID (inches)	Approx. OD (inches)	Length (feet)	AASHTO Min. Pipe Stiffness @ 5% Deflection (psi)	Corrugation Pitch (inches)	Approx. Wt./Ft. (lbs)
4"	4.60"	20'	50	.67"	.5
6"	7.05"	20'	50	.80"	1.0
8"	9.50"	20'	50	1.00"	1.7
10"	11.60"	20'	50	1.30"	2.3
12"	14.40"	10'/20'	50	2.00"	3.1
15"	17.60"	10'/20'	42	2.67"	4.5
18"	21.50"	11'/20'	40	3.00"	6.5
24"	28.40"	11'/20'	34	4.00"	11.0
30"	34.80"	11'/20'	29	4.00"	14.6
36"	41.00"	11'/20'	22.5	4.00"	19.0
42"	47.80"	11'/20'	21	6.00"	25
48"	54.40"	11'/20'	20	6.00"	30
60"	66.50"	11'/20'	15	6.00"	40

Dual-Wall PE Pipe: Manning's "n" = 0.012

Collection & Conveyance
Dual-Wall Specs

Flow Chart Full Flow Capacity GPM | Slope (ft./100 ft.)

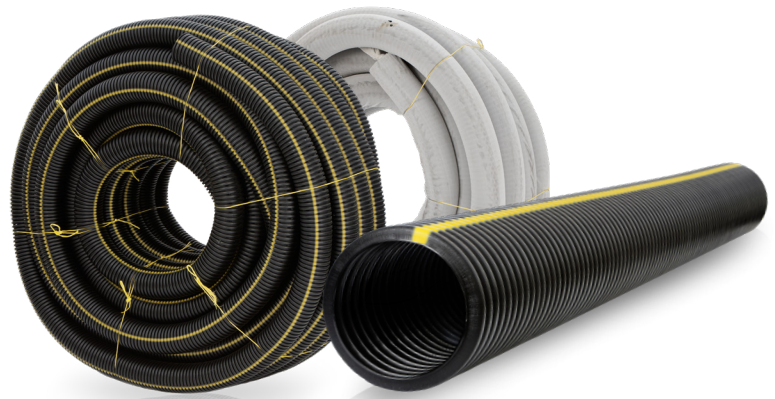
Pipe Diameter	Conveyance Factor(k)	0.02	0.05	0.10	0.20	0.50	1.0	2.0	5.0	10.0	20.0
4"	2.1	13	21	29	41	65	93	131	207	293	414
6"	6.1	39	61	86	122	193	273	386	610	863	1,220
8"	13.1	83	131	186	263	415	588	831	1,314	1,858	2,628
10"	23.7	151	238	337	476	753	1,065	1,507	2,382	3,369	4,764
12"	38.6	245	387	548	775	1,225	1,732	2,450	3,874	5,478	7,747
15"	70	444	702	993	1,405	2,221	3,141	4,442	7,023	9,933	14,047
18"	113.8	722	1,142	1,615	2,284	3,612	5,108	7,223	11,421	16,152	22,842
24"	245.1	1,556	2,460	3,478	4,919	7,778	11,000	15,556	24,596	34,784	49,192
30"	444.4	2,820	4,460	6,307	8,919	14,102	19,944	28,205	44,596	63,068	89,192
36"	722.6	4,586	7,252	10,256	14,504	22,932	32,431	45,864	72,518	102,556	145,036
42"	1,089.9	6,918	10,939	15,470	21,878	34,592	48,920	69,183	109,388	154,698	218,776
48"	1,556.1	9,877	15,618	22,087	31,235	49,387	69,844	98,775	156,176	220,867	312,353
60"	2,821.5	17,908	28,315	40,043	56,629	89,539	126,627	179,078	283,147	400,430	566,293

Q = 448.8 k S 1/2

Q = Pipe Capacity, gpm
S = Slope, Ft/Ft
k = Conveyance Factor

To determine CFS, divide values in chart by 448.8

GOLDLINE® is a soil-tight, high density polyethylene plastic pipe. It is available in mini rolls, maxi coils, and 10 and 20 foot stick lengths. GOLDLINE® is available in perforated (slots, holes, punch) or non-perforated configurations, and can be supplied with high performance geotextile fabric.



Collection & Conveyance
GOLDLINE®

Features & Benefits

- Lightweight and easy to maneuver for efficient installation
- Meets or exceeds **ASTM F667** requirements
- Available in AASHTO grade to meet or exceed **AASHTO M252** or **M294** requirements
- HDPE material is completely resistant to rusting, corrosion, and deterioration
- Available in perforated and non-perforated configurations
- Available in coils or sticks
- Non-perforated 10 foot lengths are available with Prinsco Lock-Fast Integral Couplers
 - Each pipe end has four built-in lugs which snap into place by simply pushing the two adjoining pipe ends together, eliminating the need for a separate coupler

Perforated Lengths

Diameter	Number	Length
3"	030010PF	10'
4"	040010LBC	10'
4"	040010PFC	10'
4"	040020PF	20'
6"	060020PF	20'
8"	080020PF	20'
10"	100020PF	20'
12"	120020PF	20'
15"	150020PF	20'

Non-Perforated Lengths

Diameter	Number	Length
3"	030010NP	10'
4"	040010NPC	10'
4"	040020NP	20'
6"	060020NP	20'
8"	080020NP	20'
10"	100020NP	20'
12"	120020NP	20'
15"	150020NP	20'

Non-Perforated Lengths with Lock-Fast® Coupler

Diameter	Number	Length
8"	080010NPC	10'
10"	100010NPC	10'
12"	120010NPC	10'
15"	150010NPC	10'

Non-Perforated Coils

Diameter	Number	Length	Unit
3"	030100NP	100'	Micro
3"	030300NP	300'	Mini
4"	040100NP	100'	Micro
4"	040250NP	250'	Mini
5"	050165NP	165'	Mini
6"	060100NP	100'	Mini
8"	080390NP	390'	Mini

Perforated Coils

Diameter	Number	Length	Unit
3"	030100PF	100'	Micro
3"	030300PF	300'	Mini
4"	040100PF	100'	Micro
4"	040150PF	150'	Micro
4"	040250PF	250'	Mini
5"	050165PF	165'	Mini
6"	060100PF	100'	Mini
8"	080390PF	390'	Mini

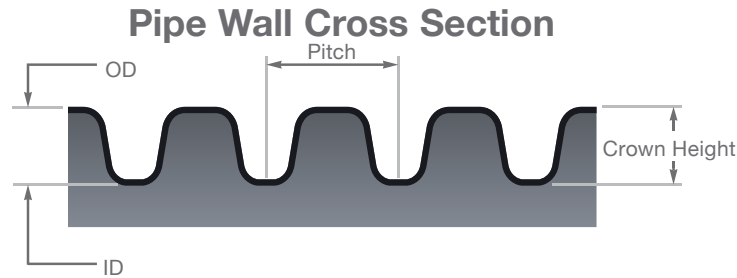
GOLDLINE® Accessories:
See pages 28-29

Pipe with Knitted Polyester

Diameter	Number	Length	Unit	Diameter	Number	Length	Unit	Diameter	Number	Length	Unit
3"	030100SF	100'	Micro	8"	080020SF*	20'	Stick	12"	120020SF*	20'	Stick
3"	030300SF	300'	Mini	8"	080390SF	390'	Mini	15"	150020SF*	20'	Stick
4"	040100SF	100'	Micro	10"	100020SF*	20'	Stick				

* Special Order Items. Note: Geotextile fabric specifications are available upon request.

Collection & Conveyance
GOLDLINE®



Dimensions, Weights and Strength

Nominal ID (inches)	Approx. OD (inches)	Stick Length (feet)	Micro Roll (feet)	Mini Roll (feet)	Maxi Roll (feet)	Corrugation Pitch (inches)	Corrugation Crown Ht. (inches)	Nominal Flow Area (sq in)	Approx. Wt./Ft. (lbs)
3"	3.6"	-----	100'	300'	5,300'	0.67"	0.30"	7.1in ²	0.2
4"	4.6"	10'	100'	250'	3,000'	0.67"	0.30"	12.6in ²	0.3
5"	5.7"	-----	-----	165'	2,300'	0.67"	0.35"	19.6in ²	0.5
6"	6.8"	-----	-----	100'	1,450'	0.80"	0.40"	28.3in ²	0.7
8"	9.5"	10'/20'	-----	390'	825'	1.00"	0.75"	50.3in ²	1.3
10"	11.6"	10'/20'	-----	-----	525'	1.30"	0.80"	78.5in ²	1.8
12"	14.2"	10'/20'	-----	-----	320'	2.00"	1.10"	113.1in ²	3.0
15"	18.3"	10'/20'	-----	-----	-----	2.70"	1.65"	176.7in ²	4.3

Mobile Resources



- More about GOLDLINE®
- Installation Videos
- Installation Documents
- Specifications
- Technical Notes

**Prinsco.com/
goldline-resources**



Flow Chart Full Flow Capacity GPM | Slope (ft./100 ft.)

Single-wall PE pipe: Manning's "n" = 0.015-0.018

Diameter	Hydraulic Slope									
	0.02	0.05	0.10	0.20	0.50	1.0	2.0	5.0	10.0	20.0
3"	5	7.7	11	15	24	34	49	77	109	154
4"	11	17	23	33	52	74	105	166	234	331
5"	19	30	42	60	95	134	190	300	425	600
6"	31	49	69	98	154	218	309	488	690	976
8"	62	99	139	197	312	441	623	985	1,394	1,971
10"	106	168	238	336	532	752	1,064	1,682	2,378	3,363
12"	163	258	365	516	817	1,155	1,633	2,582	3,652	5,165
15"	296	468	662	937	1,481	2,094	2,961	4,682	6,622	9,365

To determine CFS, divide values in chart by 448.8 Q = 448.8 k S^{1/2} Q = Pipe Capacity, gpm S = Slope, Ft/Ft k = Conveyance Factor

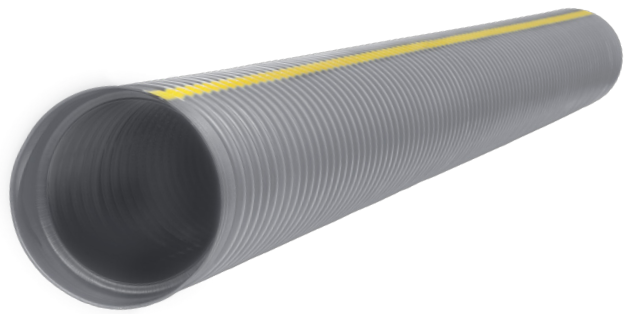
GOLDPRO STORM®

STORMWATER SOLUTIONS / COLLECTION & CONVEYANCE / DUAL-WALL

GOLDPRO STORM® is a dual-wall high performance (HP) corrugated polypropylene pipe. The combination of our engineered materials and watertight joint design result in a high performance pipe solution that is ideal for critical stormwater management applications.

GOLDPRO STORM® meets the stringent requirements of polypropylene ASTM F2881 and AASHTO M330, with joints that meet the requirements of ASTM D3212.

GOLDPRO STORM® is perfect for projects where structural integrity, joint performance, installation efficiency, and overall quality are critical to your success.



Available Sizes

Diameter (in.)	Number	Nominal Length (ft.)
12"	12PP20NP	20'
15"	15PP20NP	20'
18"	18PP20NP	20'
24"	24PP20NP	20'
30"	30PP20NP	20'
36"	36PP20NP	20'
42"	42PP20NP	20'
48"	48PP20NP	20'
60"	60PP20NP	20'

Performance

Goldpro Storm® pipe meets the following:

- **ASTM F2881:** Standard specification for 12 to 60 in (300 to 1500mm) Polypropylene (PP) Dual-Wall Pipe and Fittings for Non-Pressure Storm Sewer Applications
- **AASHTO M330:** Standard specification for 12 to 60 in (300 to 1500mm) Polypropylene (PP) Dual-Wall Pipe
- **ASTM D3212:** Standard Specification for Joints for Drain and Sewer Plastic Pipes using Flexible Elastomeric Seals
- **ASTM F477:** Standard Specification for Elastomeric Seals (Gaskets) for Joining Plastic Pipe

Features

- Engineered blend of polypropylene material ensures maximum service life and maximum performance
- Increased pipe stiffness results in greater installation security and reduces installation induced damage
- Increased beam stiffness helps to hold true grade when site conditions vary unexpectedly
- Joint performance is enhanced to maximize the field service performance and lessen site condition related sensitivity
- The industry proven dual-wall design ensures reliable and consistent long term performance
- Lightweight and easy field manipulation saves time, labor, and allows for the use of smaller equipment while contributing to a safer working environment
- Fittings to meet your specific needs and reduce field fabrication and costly structures

Physical Pipe Dimensions

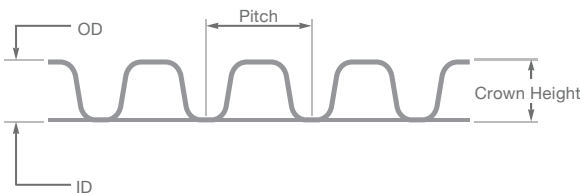
Nominal ID (in)	Approximate OD (in)	Length (ft)	Corrugation Pitch (in)	Min. Pipe Stiffness @ 5% Deflection (psi)
12"	14.6"	20'	2.00"	70
15"	17.8"	20'	2.67"	60
18"	21.5"	20'	3.00"	56
24"	28.2"	20'	4.00"	50
30"	34.7"	20'	4.00"	46
36"	40.9"	20'	4.00"	40
42"	47.9"	20'	6.00"	35
48"	54.6"	20'	6.00"	30
60"	67.0"	20'	5.90"	25

Applications

- Storm Sewers
- Highway Drainage
- Industrial Applications
- Ditch Enclosures
- Low Head Irrigation
- Other Critical Drainage Applications

* Contact your Prinsco representative regarding application suitability questions.

Pipe Cross Section



Mobile Resources



More about **GOLDPRO STORM®**
Installation Videos
Installation Documents
Specifications
Technical Notes



Prinsco.com/goldpro-resources

GOLDPRO STORM® Accessories:
See pages 26-27

RETENTION | DETENTION SOLUTIONS

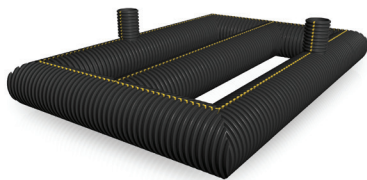
Retention | Detention Systems

Prinsco's storage solutions allow developers and project owners to use land as efficiently as possible by storing stormwater runoff underground, preserving the surface area for parking, recreation or other similar applications. Underground systems reduce safety and health risks, while at the same time eliminate the aesthetic and maintenance issues associated with above ground systems.

Underground storage solutions can provide either retention or detention. A retention system is designed to store and release water into the ground for groundwater recharge. A detention system is used to store water which is then released downstream offsite.

Prinsco's storage systems are tailored to meet your project specific size, shape, and storage requirements, and can be designed using high performance pipe or arched stormwater chambers. The decision to use one or the other is determined by soil conditions, percolation needs, depth to percolation layer and land availability.

Pipe Systems

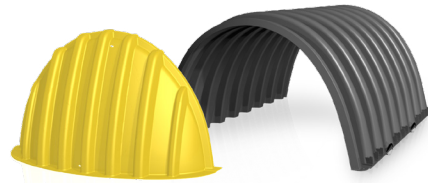


Benefits:

- Highly customizable to job site constraints
- High performance, large diameter HDPE pipe and fittings
- Allows for maximum burial depths
- Proven performance to H-20 and H-25 loading

Pipe Systems on pages 16 - 17

HydroStor® Chamber Systems



Benefits:

- Provides maximum storage per square foot
- Provides maximum infiltration & recharge
- Smaller footprint with lower installed cost
- Efficient to ship & handle on job site

HydroStor Chamber Systems on pages 18 - 19

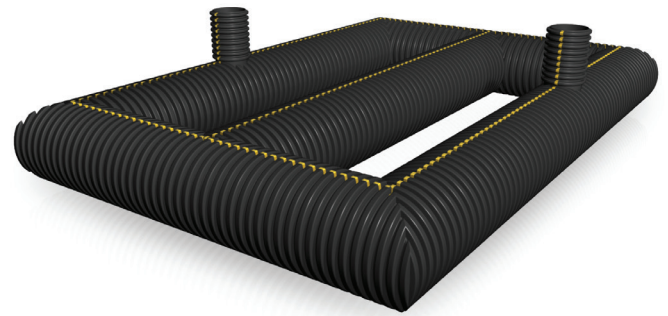
More details on Pipe and Chamber systems on the following pages



PIPE SYSTEMS

STORMWATER SOLUTIONS / STORAGE / RETENTION | DETENTION / PIPE

Prinsco's underground detention systems are completely customizable to your unique project and can be designed with the support of our Prinsco engineering team. Our detention systems can be perforated, allowing for percolation into the soil for groundwater recharge, or solid, containing the storm event for a controlled release into a municipal storm sewer. Headers and Laterals combine to create an "underground pond" allowing valuable land to be utilized for green-space, parking lots and more. Prinsco systems are closed, mitigating the health risks and safety hazards associated with an open pond.

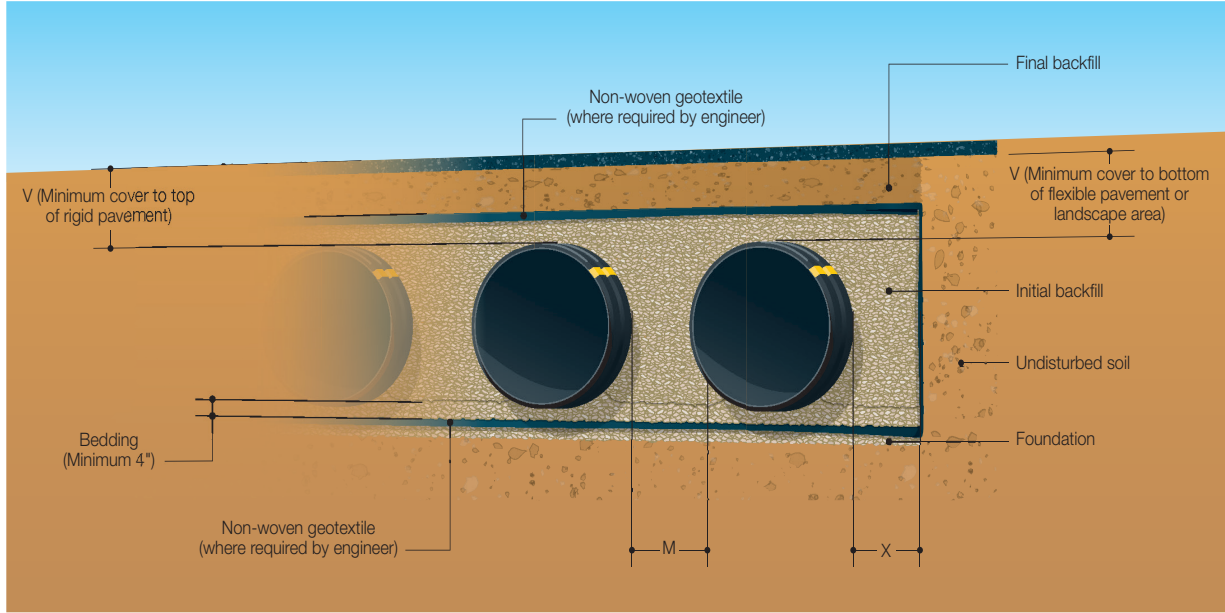


Features & Benefits

Prinsco's Underground Detention Systems provide a cost-effective, highly customizable way to store storm water.

- Manufactured out of strong, durable, HDPE pipe and fittings
- Customizable layout designs can be tailored to specific job site constraints
- Proven performance under H-20 and H-25 loading
- HDPE available up to 60" in diameter
- Optional perforations allow stone void volume used as storage
- Optional risers allow man-entry and easy cleanout
- Seamless header components and custom fabricated fitting available
- Detention tools are available for calculating the amount of pipe needed for desired storage (including perforated systems)

Installation of Parallel Pipe



Storage / Retention | Detention
Pipe Systems

Installation Recommendations

Pipe Diameter (in.)	Bedding Depth to Trench Wall (in.)*	"V" Minimum (in.)*	"X" Minimum (in.)*	"M" Minimum (in.)*
12"	4"	12"	8"	9"
15"	4"	12"	8"	11"
18"	4"	12"	9"	14"
24"	4"	12"	10"	19"
30"	4"	12"	18"	20"
36"	4"	12"	18"	21"
42"	6"	15"	18"	23"
48"	6"	18"	18"	23"
60"	6"	18"	18"	27"

*Dimensions measured from outside diameters.

Installation

Detention and/or Retention Systems shall be installed in accordance with the latest edition of ASTM D2321 and Prinsco's installation guidelines. A non-woven geotextile filter fabric or other measures should be taken to prevent native soil from migrating into the initial backfill material, when required.

Foundation: Unstable trench bottoms, or rock, or unyielding material shall be excavated to a depth directed by the engineer and replaced with suitable material. For unstable materials, geotextile may be used to stabilize the trench bottom, if directed by the engineer.

Bedding: Suitable material shall be Class I or II, as specified by ASTM D2321. Minimum bedding thickness shall be 4".

Initial Backfill: Suitable material shall be Class I or II, as specified by ASTM D2321. Compaction and backfill lifts shall be in accordance with ASTM D2321. Initial backfill shall extend to not less than 6" above the top of the pipe.

Minimum Cover: For up to H-25 traffic applications a minimum of 12" for pipe up to 36" diameter, 15" for 42" diameter and 18" for 48" and 60" diameter. Minimum cover, V, shall be measured from the top of the pipe to bottom of flexible pavement or to the top of rigid pavement. Additional cover may be required for heavier loads, construction loads or to prevent flotation.

Final Backfill: Suitable materials directed by the engineer shall be used in landscape or non-traffic applications. For areas subjected to traffic a higher degree of compaction is required and a separation layer of non-woven geotextile may be required. Compaction levels and/or geotextile may be specified at the discretion of the design engineer.

Fittings: Available with either plain end or belled end. Custom fittings can be tailored to meet project needs/requirements.

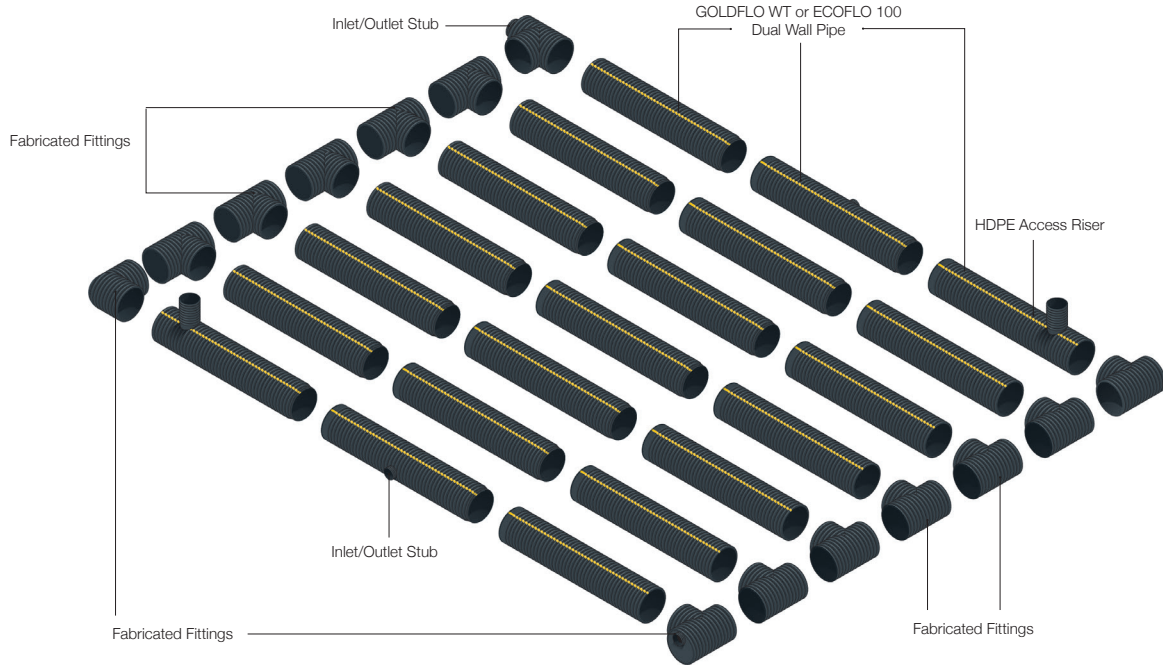
Mobile Resources



More about Detention
Installation Videos
Installation Documents
Specifications
Technical Notes



Underground System Components



Storage / Retention | Detention
Pipe Systems



Green Fact:

When ECOFLO100 is used in a detention system it creates the perfect sustainable water conservation solution.

Pipe Properties

Diameter (in.)	OD/Width (in.)	Length (ft.)
12"	14.4"	10'/20'
15"	17.6"	10'/20'
18"	21.5"	11'/20'
24"	28.2"	11'/20'
30"	34.6"	11'/20'
36"	40.6"	11'/20'
42"	47.7"	11'/20'
48"	54.0"	11'/20'
60"	66.7"	11'/20'

Backfill Properties: Stone Porosity*

Diameter (in.)	Volume (cf/lf)	40% (cf/lf)	35% (cf/lf)	30% (cf/lf)
12"	0.80	0.89	0.78	0.67
15"	1.24	1.10	0.96	0.82
18"	1.79	1.56	1.39	1.19
24"	3.19	2.62	2.29	1.96
30"	4.78	3.46	3.03	2.60
36"	6.91	4.24	3.72	3.19
42"	9.39	5.31	4.64	3.98
48"	12.57	6.59	5.76	4.94
60"	19.44	9.89	8.63	7.39

*Additional storage (cf/lf) for perforated systems. Based on conservative values.

Detention System Design Aids



Pipe Design Aid
prinsco.com/detention-design

Chamber Design Aid
prinsco.com/chamber-design

HydroCAD with Prinsco
prinsco.com/hydrocad



STORMWATER SOLUTIONS / STORAGE / RETENTION | DETENTION / CHAMBER

Prinsco offers four sizes of high-performance HydroStor® stormwater chambers designed for site-specific applications such as parking lots, roadways and commercial developments. HydroStor® chambers provide an environmentally sustainable underground water management system that optimizes groundwater recharge and saves valuable land resources. Our four storm chamber models are designed to fit almost any type of performance specifications, project footprint and construction budget.

Features & Benefits

- Minimal footprint
- Integrated handles for safe on-site handling
- Meets or exceeds **ASTM 2418** product standards & **ASTM F2787** design standards
- Meets **AASHTO H20** live load & **HL93** design load requirements



HS290



HS180



HS75



HS31

	HS290	HS180	HS75	HS31
Product Number	HS290C	HS180C	HS75C	HS31C
Installed Storage Capacity*	164.5 ft ³ /chamber	176 ft ³ /chamber	74.9 ft ³ /chamber	31.1 ft ³ /chamber
Height	59.5"	45.5"	29.7"	15.9"
Width	100.5"	77.8"	51"	33.9"
Unit Length	51.8"	88.7"	87.1"	87.8"
Installed Length	48.3"	85.3"	84.9"	85.4"
Weight	125 lbs	127 lbs	70 lbs	32 lbs
Chambers/Pallet	10	19	33	45
Material	Polypropylene	Polypropylene	Polypropylene	Polypropylene
Mfg. Process	Injection Molding	Injection Molding	Injection Molding	Injection Molding
Special Features	Integrated Handles	Integrated Handles	Integrated Handles	Integrated Handles
ASTM Standards	Meets or Exceeds	Meets or Exceeds	Meets or Exceeds	Meets or Exceeds

* Assuming 40% void volume of backfill with 9" bedding & 12" cover for HS290 and HS180, and 6" bedding & 6" cover for HS75 and HS31

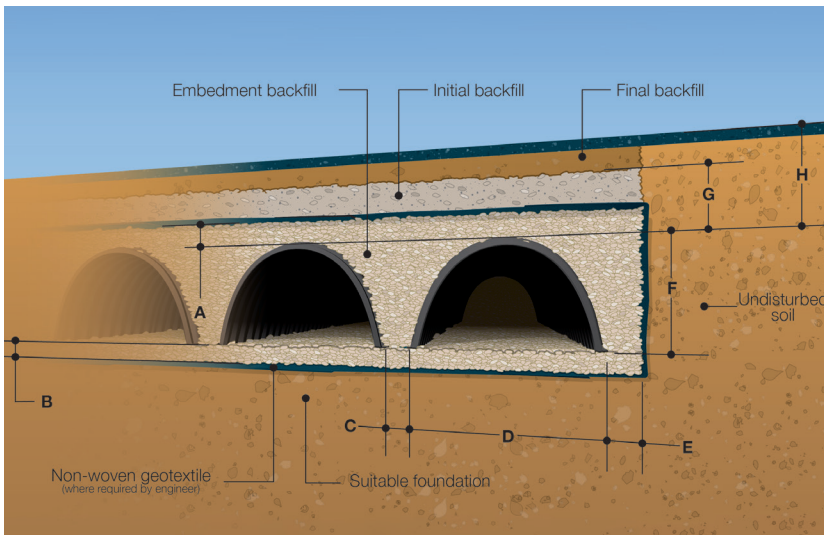
Available End Cap Sizes

	HS290 End Cap	HS180 End Cap	HS75 End Cap	HS31 End Cap
Product Number	HS290E	HS180E	HS75E	HS31E
Installed Storage Capacity*	114.46 ft ³ /end cap	44.8 ft ³ /end cap	13.9 ft ³ /end cap	5 ft ³ /end cap
Height	59.3"	44.7"	29.4"	16"
Width	94"	78.5"	48.1"	33"
Unit Length	35"	24"	11.6"	7.4"
Installed Length	32.4"	22.1"	10.1"	6.2"
Weight	79.9 lbs	52 lbs	12 lbs	3.47 lbs

* Assuming 40% void volume of backfill with 9" bedding & 12" cover for HS290 and HS180, and 6" bedding & 6" cover for HS75 and HS31

Storage / Retention | Detention
HydroStor®

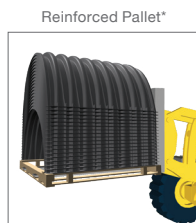
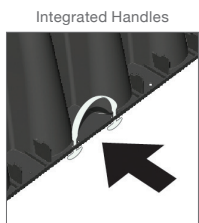
Installation Specifications



	HS290	HS180	HS75	HS31
A Min. Backfill Above Chamber	12"	12"	6"	6"
B Minimum Bedding	9"	9"	6"	6"
C Chamber Spacing	8.5"	5"	6"	6"
D Chamber Width	100.5"	77.8"	51"	33.9"
E Backfill at Edge of System	12"	12"	12"	12"
F Chamber Height	59.5"	45.5"	29.7"	15.9"
G Minimum Cover	24"	18"	18"	18"
H Maximum Burial Depth	8'	8'	8'	8'

Handling

- Integrated Handles for safe on-site handling
- Sturdy and lightweight for safe transport and placement by 2 people
- Specially designed pallet for trouble free handling
- Maximum stacking density to reduce on-site staging footprint



*minimum 72" forks required

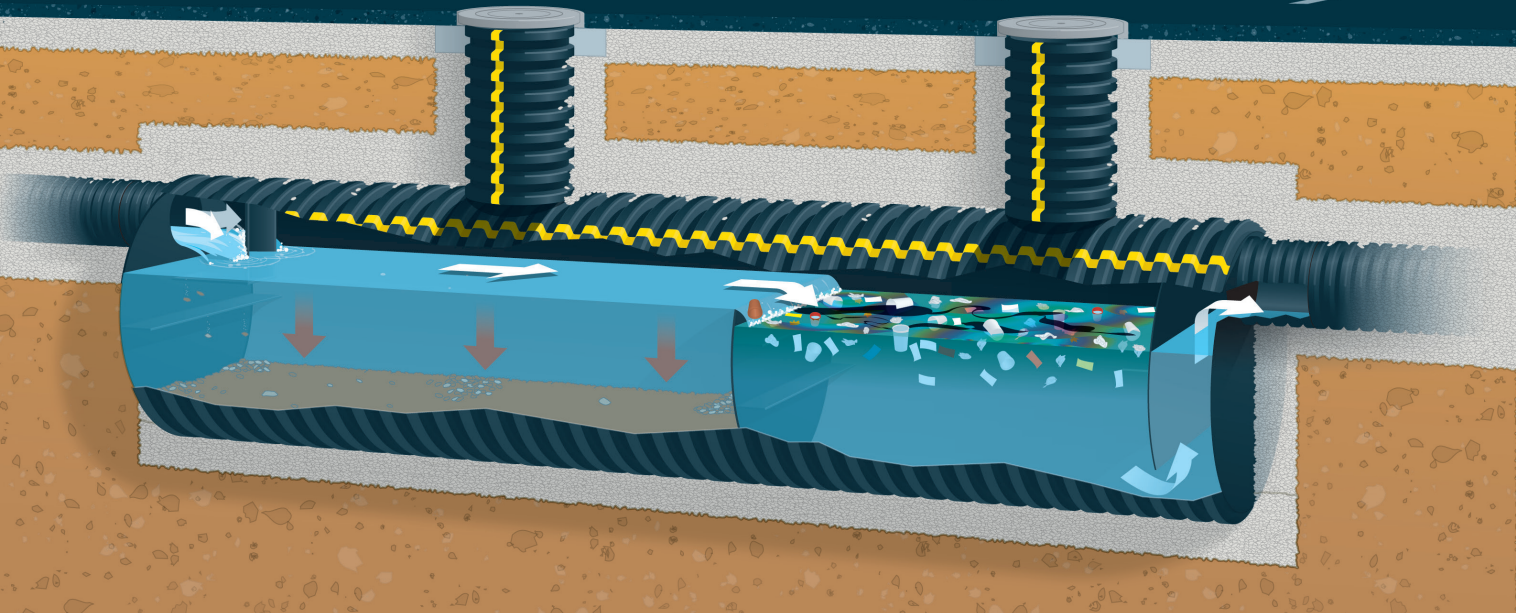
Online Resources



More about HydroStor®
 Installation Videos
 Installation Documents
 Specifications
 Technical Notes

[Prinsco.com/hydrostor-resources](https://prinsco.com/hydrostor-resources)

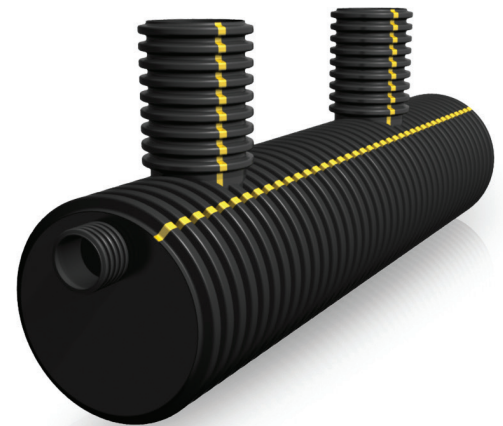




STORMWATER QUALITY UNIT

STORMWATER SOLUTIONS / TREATMENT / STORMWATER QUALITY

As part of Prinsco's water management product portfolio, the Prinsco Stormwater Quality Unit (SWQU) is designed to treat stormwater to remove debris collected in runoff including trash, sediment, oils, and other suspended solids. The Prinsco SWQU offers an extremely cost-effective alternative to heavier reinforced concrete units and can be installed quicker with smaller equipment, allowing further cost savings. Prinsco offers standard units to meet common project criteria; however, we can assist you in the sizing of a custom SWQU to most cost effectively meet your performance requirements.



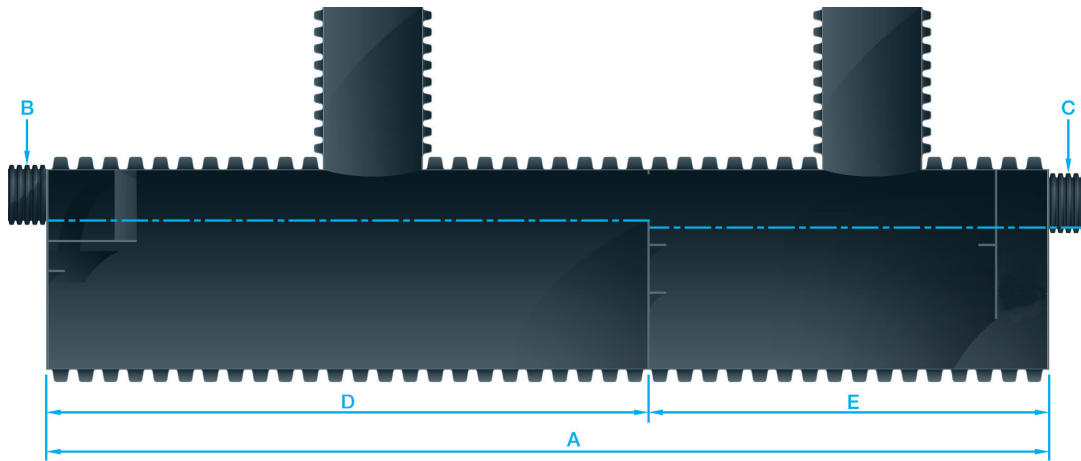
Industry Standards

Prinsco's Stormwater Quality Units meet or exceed the following:

- **ASTM F2306:** Standard Specification for 12" - 60" (300 - 1500 mm) Annular Corrugated Profile-Wall Polyethylene (PE) Pipe and Fittings for Gravity-Flow Storm Sewer and Subsurface Drainage Applications
- **AASHTO M252:** Standard Specification for Corrugated Polyethylene Drainage Pipe, 75 - 250mm Diameter
- **AASHTO M294:** Standard Specification for Corrugated Polyethylene Pipe, 300 - 1500 mm Diameter
- **ASTM F2737:** Standard Specification for Corrugated High Density Polyethylene (HDPE) Water Quality Units

Features & Benefits

- Independently tested = Assured performance
- Total Suspended Solids Removal Exceeds 80%
- Removes 80% Oil and Grease
- Removes floatables and trash
- Unit is lightweight and easy to install using minimal labor and equipment
- Access risers allow for easy inspection and maintenance of containment chambers
- SWQU is compatible with Prinsco's pipe and accessories
- SWQU design is efficient with no moving parts, resulting in trouble free operation



Available Sizes

Product Name	SWQU Diameter	Inlet Stub Diameter (B) (C) in.	SWQU Length (A) ft	Sediment Chamber Storage Volume ft ³	Oil Chamber Storage Volume ft ³	Total Storage Volume ft ³	Sediment Chamber Length (D) in.	Floatable Chamber Length (E) in.	Max Treated Flow Rate @ 140 Sieve Size (cfs)	Max Treated Flow Rate @ 200 Sieve Size (cfs)
WQU3620	36	10"	20'	64.2'	32.7'	96.9'	147"	75"	1.5	0.74
WQU3640	36	10"	40'	132.7'	68.1'	200.8'	304"	156"	3.08	1.55
WQU4220	42	12"	20'	86.6'	41.8'	128.4'	147"	71"	1.77	0.88
WQU4240	42	12"	40'	179'	88.9'	267.9'	304"	151"	3.66	1.83
WQU4820	48	12"	20'	119.3'	57.6'	176.9'	147"	71"	2.31	1.15
WQU4840	48	12"	40'	246.8'	122.6'	369.4'	304"	151"	4.77	2.39
WQU6020	60	15"	20'	188.9'	93.1'	282'	144"	71"	2.99	1.5
WQU6040	60	15"	40'	397.5'	192.8'	590.3'	303"	147"	6.31	3.15

Applications

- Parking Lots
- Gas Stations
- Industrial Sites
- Parking Garages
- Detention Systems
- Water Re-use Facilities (non-potable)

* Contact your Prinsco representative regarding application suitability questions.



Mobile Resources



More about **Stormwater Quality Unit**

- Installation Videos
- Installation Documents
- Specifications
- Technical Notes

Prinsco.com/swqu-resources



Green Fact:

Litter can reach waterways through the stormwater system. A stormwater quality unit can prevent the majority of floating and suspended debris from reaching waterways.

ACCESSORIES



Watertight GOLDLOK™ Coupler

Size	Number
12"	GFWTS12
15"	GFWTS15
18"	GFWTS18
24"	GFWTS24
30"	GFWTS30
36"	GFWTS36
42"	GFWTS42
48"	GFWTS48
60"	GFWTS60



SOIL TIGHT SPLIT COUPLER

Size	Number	Unit
4"	SC04	Pkg of 75
6"	SC06	Pkg of 50
8"	SC08	Pkg of 75
10"	SC10	Pkg of 50
12"	SC12	Pkg of 25
15"	SC15H	Each
18"	SC18	Each
24"	SC24	Each
30"	SC30	Each
36"	SC36C	Each
36"	SC36U	Each
42"	SC42	Each
48"	SC48	Each
60"	SC60	Each



TEE

Size	Number
4"	GFT0404
6"	GFT0606
8"	GFT0808
10"	GFT1010
12"	GFT1212
15"	GFT1515
18"	GFT1818
24"	GFT2424
30"	GFT3030
36"	GFT3636
42"	GFT4242
48"	GFT4848
60"	GFT6060



ELBOW - 22.5°

Size	Number
4"	GFE0422
6"	GFE0622
8"	GFE0822
10"	GFE1022
12"	GFE1222
15"	GFE1522
18"	GFE1822
24"	GFE2422
30"	GFE3022
36"	GFE3622
42"	GFE4222
48"	GFE4822
60"	GFE6022



ELBOW - 90° (2-Piece)

Size	Number
4"	GFE04902
6"	GFE06902
8"	GFE08902
10"	GFE10902
12"	GFE12902
15"	GFE15902
18"	GFE18902
24"	GFE24902
30"	GFE30902
36"	GFE36902
42"	GFE42902
48"	GFE48902
60"	GFE60902

MARMAC COUPLER

Size	Number
4"	MM4
6"	MM6
8"	MM8
10"	MM10
12"	MM12
15"	MM15
18"	MM18
24"	MM24
30"	MM30
36"	MM36
42"	MM42
48"	MM48
60"	MM60



ELBOW - 45°

Size	Number
4"	GFE0445
6"	GFE0645
8"	GFE0845
10"	GFE1045
12"	GFE1245
15"	GFE1545
18"	GFE1845
24"	GFE2445
30"	GFE3045
36"	GFE3645
42"	GFE4245
48"	GFE4845
60"	GFE6045



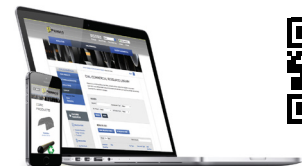
ELBOW - 90° (3-Piece)

Size	Number
4"	GFE0490
6"	GFE0690
8"	GFE0890
10"	GFE1090
12"	GFE1290
15"	GFE1590
18"	GFE1890
24"	GFE2490
30"	GFE3090
36"	GFE3690
42"	GFE4290
48"	GFE4890
60"	GFE6090

GASKET FOR SNAP COUPLER

Size	Number
4"	GFGSK04
6"	GFGSK06
8"	GFGSKOR08
10"	GFGSK10

Details & Resources



Prinsco.com/dualwall-accy

ACCESSORIES

REDUCER (One-Step)



Number	From	To
GFR0604	6"	4"
GFR0804	8"	4"
GFR0806		6"
GFR1004	10"	4"
GFR1006		6"
GFR1008		8"
GFR1204	12"	4"
GFR1206		6"
GFR1208		8"
GFR1210		10"
GFR1504	15"	4"
GFR1506		6"
GFR1508		8"
GFR1510	15"	10"
GFR1512		12"
GFR1804	18"	4"
GFR1806		6"
GFR1808		8"
GFR1810		10"
GFR1812		12"
GFR1815		15"

GFR2404	24"	4"
GFR2406		6"
GFR2408		8"
GFR2410		10"
GFR2412		12"
GFR2415		15"
GFR2418		18"
GFR3004	30"	4"
GFR3006		6"
GFR3008		8"
GFR3010		10"
GFR3012		12"
GFR3015		15"
GFR3018		18"
GFR3024		24"
GFR3604	36"	4"
GFR3606		6"
GFR3608	36"	8"
GFR3610		10"
GFR3612		12"
GFR3615		15"
GFR3618		18"
GFR3624		24"
GFR3630		30"
GFR4204	42"	4"
GFR4206		6"
GFR4208		8"
GFR4210		10"
GFR4212		12"
GFR4215		15"

GFR4218	42"	18"
GFR4224		24"
GFR4230		30"
GFR4236		36"
GFR4804	48"	4"
GFR4806		6"
GFR4808		8"
GFR4810		10"
GFR4812		12"
GFR4815		15"
GFR4818		18"
GFR4824		24"
GFR4830		30"
GFR4836		36"
GFR4842		42"
GFR6004	60"	4"
GFR6006		6"
GFR6008		8"
GFR6010		10"
GFR6012		12"
GFR6015		15"
GFR6018		18"
GFR6024		24"
GFR6030		30"
GFR6036		36"
GFR6042		42"
GFR6048		48"



EXTERNAL ENDCAPS

Size	Number	Unit
8"	EC08-GF	Each
10"	EC10-GF	Each
12"	EC12-GF	Each
15"	EC15-GF	Each
18"	EC18-GF	Each
24"	EC24-GF	Each
30"	EC30-GF	Each
36"	EC36-GF	Each
42"	EC42-GF	Each
48"	EC48-GF	Each



DUAL-WALL CATCH BASINS

Made to project specifications, maximum height up to 8'

Size	Number	Unit
12"	GFCB12	Each
15"	GFCB15	Each
18"	GFCB18	Each
24"	GFCB24	Each
30"	GFCB30	Each
36"	GFCB36	Each
42"	GFCB42	Each
48"	GFCB48	Each
60"	GFCB60	Each



SADDLE TEE

Number	From	To
GFST1004	10"	4"
GFST1006		6"
GFST1008		8"
GFST1204	12"	4"
GFST1206		6"
GFST1208		8"
GFST1210		10"
GFST1504	15"	4"
GFST1506		6"
GFST1508		8"
GFST1510		10"
GFST1512		12"
GFST1804	18"	4"
GFST1806		6"
GFST1808		8"
GFST1810		10"
GFST1812		12"
GFST1815		15"
GFST2404	24"	4"
GFST2406		6"
GFST2408		8"
GFST2410		10"
GFST2412		12"
GFST3004	30"	4"
GFST3006		6"
GFST3008		8"
GFST3010		10"
GFST3012		12"



CROSS TEE

Size	Number
4"	GFCT04
6"	GFCT06
8"	GFCT08
10"	GFCT10
12"	GFCT12
15"	GFCT15
18"	GFCT18
24"	GFCT24



WYE - 45°

Size	Number
4"	GFY0404
6"	GFY0606
8"	GFY0808
10"	GFY1010
12"	GFY1212
15"	GFY1515
18"	GFY1818
24"	GFY2424

ACCESSORIES

Accessories
ECOFLO® 100 | GOLDFLO® | GOLDFLO WT®

REDUCING WYES

Number	From	To	Size	From	To	Size	From	To
GFY0604	6"	4"	GFY2404	24"	4"	GFY4204	42"	4"
GFY0804	8"	4"	GFY2406		6"	GFY4206		6"
GFY0806		6"	GFY2408		8"	GFY4208		8"
GFY1004	10"	4"	GFY2410		10"	GFY4210		10"
GFY1006		6"	GFY2412		12"	GFY4212		12"
GFY1008		8"	GFY2415		15"	GFY4215		15"
GFY1204	12"	4"	GFY2418		18"	GFY4218		18"
GFY1206		6"	GFY3004	30"	4"	GFY4224		24"
GFY1208		8"	GFY3006		6"	GFY4804	48"	4"
GFY1210		10"	GFY3008		8"	GFY4806		6"
GFY1504	15"	4"	GFY3010		10"	GFY4808		8"
GFY1506		6"	GFY3012		12"	GFY4810		10"
GFY1508		8"	GFY3015		15"	GFY4812		12"
GFY1510		10"	GFY3018		18"	GFY4815		15"
GFY1512		12"	GFY3604	36"	4"	GFY4818		18"
GFY1804	18"	4"	GFY3606		6"	GFY4824		24"
GFY1806		6"	GFY3608		8"	GFY6004	60"	4"
GFY1808		8"	GFY3610		10"	GFY6006		6"
GFY1810		10"	GFY3612		12"	GFY6008		8"
GFY1812		12"	GFY3615		15"	GFY6010		10"
GFY1815		15"	GFY3618		18"	GFY6012		12"
			GFY3624		24"	GFY6015		15"
						GFY6018		18"
						GFY6024		24"



REDUCING TEES



Number	From	To	Number	From	To
GFT0604	6"	4"	GFT3610	36"	10"
GFT0804	8"	4"	GFT3612		12"
GFT0806		6"	GFT3615		15"
GFT1004	10"	4"	GFT3618		18"
GFT1006		6"	GFT3624		24"
GFT1008		8"	GFT3630		30"
GFT1204	12"	4"	GFT4204	42"	4"
GFT1206		6"	GFT4206		6"
GFT1208		8"	GFT4208		8"
GFT1210		10"	GFT4210		10"
GFT1504	15"	4"	GFT4212		12"
GFT1506		6"	GFT4215		15"
GFT1508		8"	GFT4218		18"
GFT1510		10"	GFT4224		24"
GFT1512		12"	GFT4230	42"	30"
GFT1804	18"	4"	GFT4236		36"
GFT1806		6"	GFT4804	48"	4"
GFT1808		8"	GFT4806		6"
GFT1810		10"	GFT4808		8"
GFT1812		12"	GFT4810		10"
GFT1815		15"	GFT4812		12"
GFT2404	24"	4"	GFT4815		15"
GFT2406		6"	GFT4818		18"
GFT2408		8"	GFT4824		24"
GFT2410		10"	GFT4830		30"
GFT2412		12"	GFT4836		36"
GFT2415		15"	GFT4842		42"
GFT2418		18"	GFT6004	60"	4"
GFT3004	30"	4"	GFT6006		6"
GFT3006		6"	GFT6008		8"
GFT3008		8"	GFT6010		10"
GFT3010		10"	GFT6012		12"
GFT3012		12"	GFT6015		15"
GFT3015		15"	GFT6018		18"
GFT3018		18"	GFT6024		24"
GFT3024		24"	GFT6030		30"
GFT3604	36"	4"	GFT6036		36"
GFT3606		6"	GFT6042		42"
GFT3608		8"	GFT6048		48"



TRASH GUARD*

Used on flared end sections with 3:1 slopes to help keep debris out and prevent clogging.

Size	Number	Unit
8"	TGS08	Each
10"	TGS10	Each
12"	TGS12	Each
15"	TGS15	Each
18"	TGS18P1215	Each
24"	TGS24P18	Each
30"	TGS30P24	Each
36"	TGS36P3036	Each
42"	TGS42	Each
48"	TGS48	Each
60"	TGS60	Each

GALVANIZED TRASH GUARD*

Used on flared end sections with 3:1 slopes to help keep debris out and prevent clogging.

Size	Number	Unit
12"	GTG12	Each
15"	GTG15	Each
18"	GTG18	Each
24"	GTG24	Each
30"	GTG30	Each
36"	GTG36	Each

WATERTIGHT BELL COUPLER GASKETS

Used to connect to Prinsco PVC Catch Basins or Fabricated Fittings

Size	Number	Unit
4"	GFGSK04WT	Each
6"	GFGSK06WT	Each
8"	GFGSK08WT	Each
10"	GFGSK10WT	Each
12"	GFGSK12WT	Each
15"	GFGSK15WT	Each
18"	GFGSK18WTMW	Each
18"	GFGSK18WTWC	Each
24"	GFGSK24WTMW	Each
24"	GFGSK24WTWC	Each
30"	GFGSK30WTMW	Each
30"	GFGSK30WTWC	Each
36"	GFGSK36WTMW	Each
36"	GFGSK36WTWC	Each

GOLDFLO WATER STOP GASKET

Size	Number	Unit
12"	GFWSG12	Each
15"	GFWSG15	Each
18"	GFWSG18	Each
24"	GFWSG24	Each
30"	GFWSG30	Each
36"	GFWSG36	Each
42"	GFWSG42	Each
48"	GFWSG48	Each
60"	GFWSG60	Each



STEEL APRONS*

Used on projects where 2.5:1 slope is specified. Fits contour and assists water flow through the culvert.

Size	Number	Unit
8"	ES08	Each
10"	ES10	Each
12"	ES12	Each
15"	ES15	Each
18"	ES18	Each
24"	ES24	Each
30"	ES30	Each
36"	ES36	Each
42"	ES42	Each
48"	ES48	Each
60"	ES60	Each



SAFETY APRONS*

Used where 6:1 slopes are required. Available with or without safety grate.

Size	Number	Unit
12"	SA0012	Each
15"	SA0015	Each
18"	SA0018	Each
24"	SA0024	Each

*Safety aprons are all special-order items.



PLASTIC APRONS*

High density polyethylene aprons designed for GOLDLINE and GOLDFLO/ECOFLO applications

Size	Number	Unit
12"	PLAP12	Each
15"	PLAP15	Each
18"	PLAP18	Each
24"	PLAP24	Each
30"	PLAP30	Each
36"	PLAP36	Each

*Sized for Prinsco pipe. Contact a Prinsco sales rep for other applications.



PIPE ADAPTER

Size	Number	Unit
12"	GFA12	Each
15"	GFA15	Each
18"	GFA18	Each
24"	GFA24	Each
30"	GFA30	Each
36"	GFA36	Each

RUBBER FLEXIBLE MANHOLE ADAPTER

Size	Number	Unit
12"	GFAD12MH	Each
15"	GFAD15MH	Each
18"	GFAD18MH	Each
24"	GFAD24MH	Each

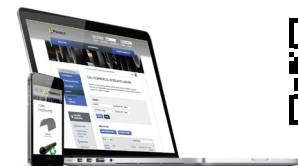
GOLDFLO HDPE X SDR35 SPIGOT ADAPTER

Size	Number	Unit
4"	GFAD04MH-PVC35	Each
6"	GFAD06MH-PVC35	Each
8"	GFAD08MH-PVC35	Each
10"	GFAD10MH-PVC35	Each
12"	GFAD12MH-PVC35	Each
15"	GFAD15MH-PVC35	Each
18"	GFAD18MH-PVC35	Each
24"	GFAD24MH-PVC35	Each

GOLDFLO HDPE X SDR40 SPIGOT ADAPTER

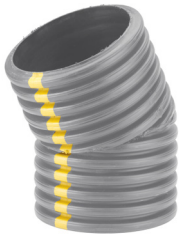
Size	Number	Unit
4"	GFAD04MH-PVC40	Each
6"	GFAD06MH-PVC40	Each
8"	GFAD08MH-PVC40	Each
10"	GFAD10MH-PVC40	Each
12"	GFAD12MH-PVC40	Each

Details & Resources



Prinsco.com/dualwall-accy

ACCESSORIES



ELBOW - 22.5°

Size	Number
12"	GPE1222
15"	GPE1522
18"	GPE1822
24"	GPE2422
30"	GPE3022
36"	GPE3622
42"	GPE4222
48"	GPE4822
60"	GPE6022



TEE

Size	Number
12"	GPT1212
15"	GPT1515
18"	GPT1818
24"	GPT2424
30"	GPT3030
36"	GPT3636
42"	GPT4242
48"	GPT4848
60"	GPT6060



ELBOW - 45°

Size	Number
12"	GPE1245
15"	GPE1545
18"	GPE1845
24"	GPE2445
30"	GPE3045
36"	GPE3645
42"	GPE4245
48"	GPE4845
60"	GPE6045



ELBOW - 90° (3-Piece)

Size	Number
12"	GPE1290
15"	GPE1590
18"	GPE1890
24"	GPE2490
30"	GPE3090
36"	GPE3690
42"	GPE4290
48"	GPE4890
60"	GPE6090



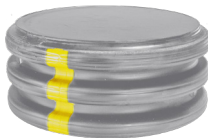
ELBOW - 90° (2-Piece)

Size	Number
12"	GPE12902
15"	GPE15902
18"	GPE18902
24"	GPE24902
30"	GPE30902
36"	GPE36902
42"	GPE42902
48"	GPE48902
60"	GPE60902



CROSS TEE

Size	Number
12"	GPCT12
15"	GPCT15
18"	GPCT18
24"	GPCT24



EXTERNAL ENDCAPS

Size	Number	Unit
12"	EC12-GP	Each
15"	EC15-GP	Each
18"	EC18-GP	Each
24"	EC24-GP	Each
30"	EC30-GP	Each
36"	EC36-GP	Each
42"	EC42-GP	Each
48"	EC48-GP	Each



PIPE ADAPTER

Size	Number	Unit
12"	GPA12	Each
15"	GPA15	Each
18"	GPA18	Each
24"	GPA24	Each
30"	GPA30	Each
36"	GPA36	Each



WYE - 45°

Size	Number
12"	GPY1212
15"	GPY1515
18"	GPY1818
24"	GPY2424

ACCESSORIES

Accessories
GOLDPRO STORM™



REDUCER (One-Step)

Number	From	To	Number	From	To
GPR1512	15"	12"	GPR4224	42"	24"
GPR1812	18"	12"	GPR4230		30"
GPR1815		15"	GPR4236		36"
GPR2412	24"	12"	GPR4812	48"	12"
GPR2415		15"	GPR4815		15"
GPR2418		18"	GPR4818		18"
GPR3012	30"	12"	GPR4824		24"
GPR3015		15"	GPR4830		30"
GPR3018		18"	GPR4836		36"
GPR3024		24"	GPR4842		42"
GPR3612	36"	12"	GPR6012	60"	12"
GPR3615		15"	GPR6015		15"
GPR3618		18"	GPR6018		18"
GPR3624		24"	GPR6024		24"
GPR3630		30"	GPR6030		30"
GPR4212	42"	12"	GPR6036		36"
GPR4215		15"	GPR6042		42"
GPR4218		18"	GPR6048		48"



REDUCING TEES

Number	From	To	Number	From	To
GPT1512	15"	12"	GPT4224	42"	24"
GPT1812	18"	12"	GPT4230		30"
GPT1815		15"	GPT4236		36"
GPT2412	24"	12"	GPT4812	48"	12"
GPT2415		15"	GPT4815		15"
GPT2418		18"	GPT4818		18"
GPT3012	30"	12"	GPT4824		24"
GPT3015		15"	GPT4830		30"
GPT3018		18"	GPT4836		36"
GPT3024		24"	GPT4842		42"
GPT3612	36"	12"	GPT6012	60"	12"
GPT3615		15"	GPT6015		15"
GPT3618		18"	GPT6018		18"
GPT3624		24"	GPT6024		24"
GPT3630		30"	GPT6030		30"
GPT4212	42"	12"	GPT6036		36"
GPT4215		15"	GPT6042		42"
GPT4218		18"	GPT6048		48"



REDUCING WYES

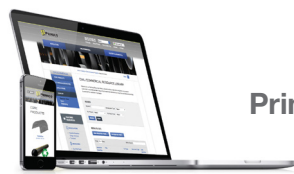
Number	From	To	Number	From	To
GPY1512	15"	12"	GPY4212	42"	12"
GPY1812	18"	12"	GPY4215		15"
GPY1815		15"	GPY4218		18"
GPY2412	24"	12"	GPY4224		24"
GPY2415		15"	GPY4812	48"	12"
GPY2418		18"	GPY4815		15"
GPY3012	30"	12"	GPY4818		18"
GPY3015		15"	GPY4824		24"
GPY3018		18"	GPY6012	60"	12"
GPY3612	36"	12"	GPY6015		15"
GPY3615		15"	GPY6018		18"
GPY3618		18"	GPY6024		24"
GPY3624		24"			



Watertight GOLDLOK™ Coupler

Size	Number
12"	GFWTS12
15"	GFWTS15
18"	GFWTS18
24"	GFWTS24
30"	GFWTS30
36"	GFWTS36
42"	GFWTS42
48"	GFWTS48
60"	GFWTS60

Details & Resources



Prinsco.com/goldpro-accy



ACCESSORIES

Accessories
GOLDLINE®



STRAIGHT TEE

Size	Number	Unit
2"	T0222	Each / Pkg. 50
3"	T0333	Each / Pkg. 50
4"	T0444	Each / Pkg. 20
5"	T0555	Each / Pkg. 5
6"	T0666	Each / Pkg. 5



BLIND TEE

Size	Number	Unit
3"	T033B	Each / Pkg. 50
4"	T044B	Each / Pkg. 20
5"	T055B	Each / Pkg. 5
6"	T066B	Each / Pkg. 5
8"	T088B	Each / Pkg. 4
10"	T100B	Each
12"	T120B	Each
15"	T150B	Each



REDUCING TEE

Size	Number	Unit
5"	T0554	Each / Pkg. 5
6"	T0654	Each / Pkg. 5
8"	T0888	Each / Pkg. 4
10"	T1010	Each
12"	T1212	Each
15"	T1515	Each



4" x 3" COMBO TEE

Size	Number	Type	Unit
3"-4"	T0434	Co. Straight	Ea./Pkg. 25
3"-4"	T043B	Co. Blind	Ea./Pkg. 25



TAP TEE

Size	Number	Type	Unit
4"	TT04S	Short	Each
4"	TT04L	Long	Each
5"	TT05S	Short	Each
5"	TT05L	Long	Each
6"	TT06S	Short	Each
6"	TT06L	Long	Each



90° ELBOW

For larger sizes (5"-15"), use a blind tee.

Size	Number	Unit
3"	E03	Each / Pkg. 25
4"	E04	Each / Pkg. 25



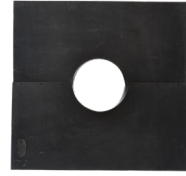
WYE

Size	Number	Unit
3"	Y03	Each / Pkg. / 25
4"	Y04	Each / Pkg. / 15
5"	Y05	Each / Pkg. / 5
6"	Y06	Each / Pkg. / 5
8"	HB08Y	Each



STEP DOWN REDUCER

Size	Number	Unit
4" x 3"	R043	Each / Pkg. 25
5" x 4"	R054	Each / Pkg. 25
6" x 4"	R064	Each / Pkg. 25
6" x 5"	R065	Each / Pkg. 25
6" x 5" x 4"	R0654	Each / Pkg. 50
8" x 6"	R086	Each
10" x 8"	R108	Each / Pkg. 5
10" x 8" x 6"	R1086	Each / Pkg. 5
12" x 10"	R1210	Each / Pkg. 5
12" x 10" x 8"	R12108	Each / Pkg. 5
15" x 12"	R1512	Each
18" x 15"	R1815	Each



*4' x 4' NO-SEEP COLLARS™

Four-foot square sheet of high density plastic fastened with stainless steel bolts.

Size	Number	Unit
4"	NSC4404	Each
6"	NSC4406	Each
8"	NSC4408	Each
10"	NSC4410	Each
12"	NSC4412	Each
15"	NSC4415	Each
18"	NSC4418	Each
24"	NSC4424	Each

*special order item

*5' x 5' NO-SEEP COLLARS™

Five-foot square sheet of high density plastic fastened with stainless steel bolts.

Size	Number	Unit
4"	NSC5504	Each
6"	NSC5506	Each
8"	NSC5508	Each
10"	NSC5510	Each
12"	NSC5512	Each
15"	NSC5515	Each
18"	NSC5518	Each
24"	NSC5524	Each

*special order item

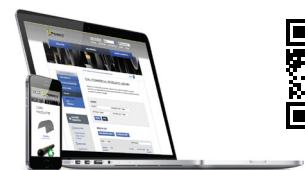
*6' x 6' NO-SEEP COLLARS™

Six-foot square sheet of high density plastic fastened with stainless steel bolts.

Size	Number	Unit
4"	NSC6604	Each
6"	NSC6606	Each
8"	NSC6608	Each
10"	NSC6610	Each
12"	NSC6612	Each
15"	NSC6615	Each
18"	NSC6618	Each
24"	NSC6624	Each

*special order item

Details & Resources



Prinsco.com/singlewall-accy



INTERNAL END PLUG

Size	Number	Unit
3"	P03	Each / Pkg. 50
4"	P04	Each / Pkg. 50
5"	P05	Each / Pkg. 25
6"	P06	Each / Pkg. 20
8"	P08	Each / Pkg. 10



EXTERNAL END CAP PLUG

Size	Number	Unit
3"	EC03	Each / Pkg. 50
4"	EC04	Each / Pkg. 50
6"	EC06	Each / Pkg. 20
8"	EC08	Each / Pkg. 10
10"	EC10	Each / Pkg. 10
12"	EC12	Each
15"	EC15	Each
18"	EC18	Each
24"	EC24	Each



INTERNAL SNAP COUPLER

Size	Number	Unit
3"	IC03	Each / Pkg. 50
4"	IC04	Each / Pkg. 50
5"	IC05	Each / Pkg. 25
6"	IC06	Each / Pkg. 20
8"	IC08	Each / Pkg. 10
10"	IC10	Each / Pkg. 5
12"	IC12	Each / Pkg. 5



EXTERNAL SNAP COUPLER

Size	Number	Unit
3"	SN03	Each / Pkg. 50
4"	SN04	Each / Pkg. 50
6"	SN06	Each / Pkg. 25
8"	SN08	Each / Pkg. 5
10"	GFSLV10	Each



CLAY ADAPTER

Adapts between corrugated pipe and clay, concrete or PVC.

Size	Number	Unit
3"	CA03	Each
4"	CA04	Each
5"	CA05	Each
6"	CA06	Each
8"	CA08	Each
10"	CA10	Each
12"	CA12	Each
15"	CA15	Each
18"	CA18	Each



SOIL-TIGHT COUPLER

Size	Number	Unit
3"	SC03	Each / Pkg. 75
4"	SC04	Each / Pkg. 50
5"	SC05	Each / Pkg. 75
6"	SC06	Each / Pkg. 50
8"	SC08	Each / Pkg. 25
10"	SC10	Each
12"	SC12	Each
15"	SC15	Each



DOWNSPOUT ADAPTER

Size	Number	Unit
3" x 3" x 2"	AD332	Each
4" x 3" x 2"	AD432	Each
4" x 4" x 3"	AD443	Each
4" x 2.5" x 2.5"	AD42525	Each
6" x 6" x 4"	AD664	Each

CATCH BASINS

Prinsco catch basins are primarily used with GOLDLINE single-wall pipe on golf courses, athletic fields, patios, lawns and parks.



12" SQUARE CATCH BASIN



6" EXTENSION 6" OUTLET

SQUARE CATCH BASIN & ACCESSORIES

The grate fits inside the top of the box to make a 12" x 12" receptacle area. The extension makes the catch basin six inches deeper. Stack several of them to increase the height.

Number	Item
CBS012	12" Catch Basin: Two Outlet
CBSG12	12" Square Grate
CBP006	Plug for 12" Catch Basin
CBS034	3"-4" Outlet for 12" Catch Basin
CBS006	6" Outlet for 12" Catch Basin
CBSX12	6" Ext. for 12" Catch Basin

RESOURCES

Your Resources. One Stop. Any Device.



Prinsco has created an extensive online resource library specifically for the Civil/Commercial market. View, Download and email resources from your computer, tablet or smartphone directly from prinsco.com/civilresources

- CAD Drawings
- Calculators
- Engineering Guides
- Installation Guides/Videos
- Specifications
- Technical Notes
- Installation Videos

Resources
Online

STORMWATER SOLUTIONS / COLLECTION & CONVEYANCE

ECOFLO[®] 100

Prinsco.com/ECOFLO100-resources



GOLDFLOWT[®]

Prinsco.com/GOLDFLOWT-resources



GOLDFLO[®]

Prinsco.com/GOLDFLO-resources



GOLDLINE[®]

Prinsco.com/GOLDLINE-resources



GOLDPRO STORM[®]

Prinsco.com/GOLDPRO-resources



STORMWATER SOLUTIONS / STORAGE

PIPE DETENTION

Prinsco.com/detention-resources



 **HydroStor[®]**

Prinsco.com/hydrostor-resources



STORMWATER SOLUTIONS / TREATMENT

SWQU (Stormwater Quality Unit)

Prinsco.com/swqu-resources



Prinsco Delivers Quality



Prinsco delivers quality from manufacturing right down to the service we provide on delivery.

The chart below gives approximate full-load quantities for a Prinsco trailer. The quantities may vary according to the length of the trailer or if common carriers are employed for shipment. In mixed-size load situations, calculate the percentage of the load that each size will constitute. Then total the percentages to determine the extent of the load. If pipe lengths are shipped, small diameter pipe may be nested inside the larger sizes. This will maximize load quantities and reduce freight costs. The chart is strictly “rule of thumb” to give you a general idea of load quantities. For more specific figures, call our customer service department.

HydroStor® - 48' Trailer

Model	Delivery	# Pallets	# Items
HS31 Chamber	Flatbed	12	540
HS31 End Cap	Flatbed	12	240
HS75 Chamber	Flatbed	11	363
HS75 End Cap	Flatbed	11	264
HS180 Chamber	Flatbed	7	133
HS180 End Cap	Flatbed	11	132
HS290 Chamber	Flatbed	10	100
HS290 End Cap	Flatbed	7	70

HydroStor® - 53' Trailer

Model	Delivery	# Pallets	# Items
HS31 Chamber	Flatbed	14	630
HS31 End Cap	Flatbed	14	280
HS75 Chamber	Flatbed	12	396
HS75 End Cap	Flatbed	12	288
HS180 Chamber	Flatbed	8	152
HS180 End Cap	Flatbed	12	144
HS290 Chamber	Flatbed	11	110
HS290 End Cap	Flatbed	8	80

GOLDLINE® 53' Trailer

Diameter	Unit	Units/Load	Footage
3"	Micro	260	26,000'
	Mini	88	26,400'
	Maxi	6	31,800'
4"	Micro	170	17,000'
	Mini	76	19,000'
	Maxi	6	18,000'
5"	Mini	76	12,540'
	Maxi	6	13,800'
6"	Mini	76	7,600'
	Maxi	6	8,700'
8"	20' Sticks	266	5,320'
	Maxi	6	4,950'
10"	20' Sticks	180	3,600'
	Maxi	6	3,150'
12"	20' Sticks	120	2,400'
	Maxi	6	1,920'
15"	20' Sticks	70	1,400'

GOLDFLO® | ECOFLO® 53' Trailer

Diameter	Unit	Units/Load	Footage
12"	10' Sticks	225	2,250'
	20' Sticks	120	2,400'
15"	10' Sticks	155	1,550'
	20' Sticks	80	1,600'
18"	11' Sticks	92	1,012'
	20' Sticks	48	960'
24"	11' Sticks	57	627'
	20' Sticks	30	600'
30"	11' Sticks	33	363'
	20' Sticks	18	360'
36"	11' Sticks	22	242'
	20' Sticks	12	240'
42"	11' Sticks	16	176'
	20' Sticks	8	160'
48"	11' Sticks	11	121'
	20' Sticks	6	120'
60"	11' Sticks	7	77'
	20' Sticks	4	80'

NESTING/TELESCOPING: All sizes through 36" will nest in the next larger size.

FITTINGS: Many of our fittings and accessories are packed in bags or bundles. For quantity packs, refer to catalog pages.



PRINSCO
WATER MANAGEMENT SOLUTIONS



PRINSCO.COM

800.992.1725