

GOLDFLEX®

WATER MANAGEMENT / DUAL-WALL

GOLDFLEX®

Goldflex® flexible dual-wall pipe has revolutionized the installation of agricultural drainage mains. It feeds directly from a stringer to a plow boot for a trenchless installation that vastly increases speed and improves safety.

As pioneers of flexible dual-wall, Prinsco continues to push the industry forward by leading the creation of a first-ever ASTM standard for flexible dual-wall pipe.

Our Goldflex gold standard of quality has now become ASTM F3390.



Goldflex® Available Configurations

Diameter(s)	Standard Length (ft.)	Connection	Pipe Features	Material
8" - 15"	190' - 825'	Coupler† Soil tight Watertight	Flexible Dual-wall Non-perforated Perforated Perforated with Sock Narrow Slot	Polyethylene (PE)

† Couplers sold separately.

Performance

Goldflex flexible dual-wall pipe meets the following:

- **ASTM F 3390:** Standard Specification for 3" – 24" (75mm – 600mm) Lined Flexible Corrugated Polyethylene Pipe for Land Drainage Applications

Benefits

- Fast installs - 60% faster than dual-wall sticks
- Dual-wall - offers optimum flow rates
- Trenchless - increases safety
- Less labor & equipment
- Ideal for high water table areas
- More flexible - 65% more than original | 17% more than competition
- Stronger - 40% stronger original | 16% stronger than competition



PRINSCO.COM

800.992.1725

rev. 062623

Boot Design

Boot Width

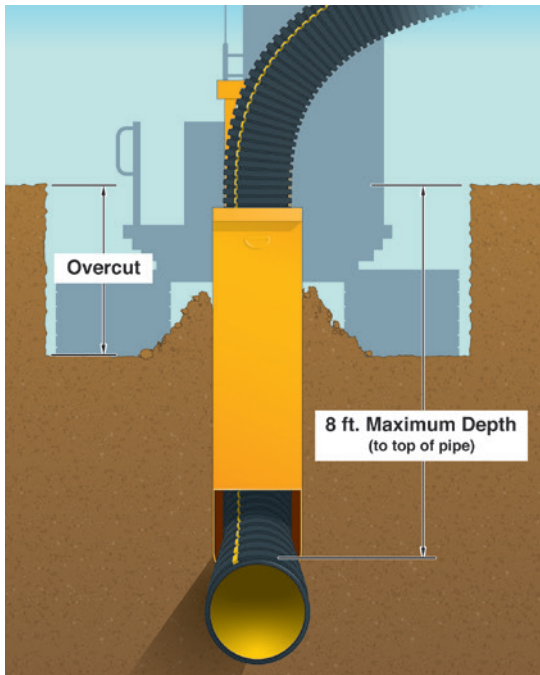
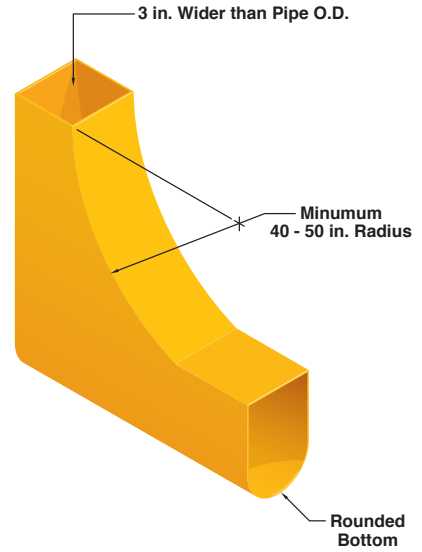
The inside of the boot should be approximately 3" wider than the outside diameter (OD) of the pipe. The additional width will help aid in initially feeding the pipe through the boot and reduce the amount of force and friction on the pipe during installation.

Bend Radius

The boot shall have a minimum 40" to 50" bend radius depending on the diameter of the pipe. A tighter bend radius will result in increased friction and force on the pipe as it moves through the boot. There are several commercial boots with similar dimensions that may be considered for use with Goldflex®.

Rounded Bottom

The boot shall have a rounded bottom to provide proper support up to the springline of the pipe. The shape of the bottom of the boot should be similar to the OD of the pipe to provide sufficient support. Pipe and recommended boot dimensions are further outlined in Prinsco's Goldflex Installation Guide.

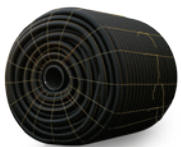


Burial Depth

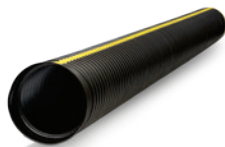
The maximum burial depth is significantly influenced by the quality and compaction level of the soil backfill around the pipe. Goldflex, along with all plastic pipe, relies on the strength of the soil around it to help carry the overburden load. In a tile plow application, an adequately shaped trench bottom is necessary to provide support to the pipe. With this in mind, the maximum recommended burial depth for Goldflex installed in native soil by a tile plow is 8 feet. Deeper burial depths may be achieved depending on native soil conditions or with imported backfills. Reference Prinsco's Agricultural Installation Guide for additional information.



Online Resources : prinsco.com/goldflex-resources



GOLDLINE®



GOLDFLO®
DUAL-WALL STICKS



GOLDFLEX®



FITTINGS



CONTROLLED DRAINAGE