



PRO 4[®]

onsite
chambers
by



ONSITE WASTEWATER / CHAMBERS



Pro4 Chambers are a highly efficient, gravelless drainfield solutions for residential and commercial septic systems. They were specifically designed for professional contractors who are looking for cost efficiency, delivery convenience, ease of installation, and application flexibility while maximizing drainfield infiltration area.

Pro4's unique, asymmetrical arches provide maximum structural performance to meet the demands of today's drainfield installations. Their interlocking coupler allows for 10° of joint articulation in either direction for contoured trench or bed applications.

| 36

| 36HC

| 36LP

| 24



Coming
Soon



| Chamber | Trench Width | 36" | 36" | 36" | 24" |
|---------|-------------------|---------------------|---------------------|---------------------|---------------------|
| | Height | 12" | 16" | 8" | 12" |
| | Width | 34" | 34" | 34" | 22" |
| | Effective Length | 48" | 48" | 48" | 48" |
| | Weight | 14.5 lbs | 17 lbs | 14 lbs | 11 lbs |
| | Invert Height | 0.5", 6", 7", 12" | 0.5", 10", 11", 16" | 0.5", 3.3", 8.8" | 0.5", 6", 7", 12" |
| | Louver Height | 8.5" | 12.2" | 6.5" | 8.5" |
| | Open Bottom Area | 9.8 ft ² | 9.8 ft ² | 9.4 ft ² | 6.4 ft ² |
| | Storage Capacity | 51 gal | 65 gal | 32 gal | 32 gal |
| | Load Rating* | H-10 | H-10 | H-10 | H-10 |
| End Cap | Length | 16" | 16.5" | 15" | 16" |
| | Width | 29" | 29" | 16" | 20" |
| | Height | 12" | 16" | 8.5" | 12" |
| | Effective Length | 13" | 13.5" | 12" | 13" |
| | Invert Elevations | 0.5", 6", 7", 12" | 0.5", 10", 11", 16" | 0.5", 3.3", 8.5" | 0.5", 6", 7", 12" |
| | Endcap Storage | 7 gal | 10 gal | 3.4 gal | 4.5 gal |
| | Weight | 2.6 lbs | 4.5 lbs | 2 lbs | 2.7 lbs |

*See installation instructions for backfill and cover requirements.



PRINSCO.COM

800.992.1725

Performance and Versatility

Asymmetrical Arch Design

– Supports wheel loads of 16,000 lbs/axle with 12" of cover

Inspection Port – Includes provision for 4" inspection port at each chamber to chamber and chamber to endcap connection

Interlocking Couplers – Includes interlocking coupler with 10° joint articulation in either direction

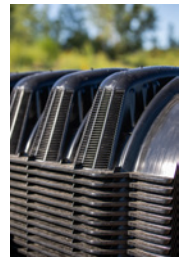
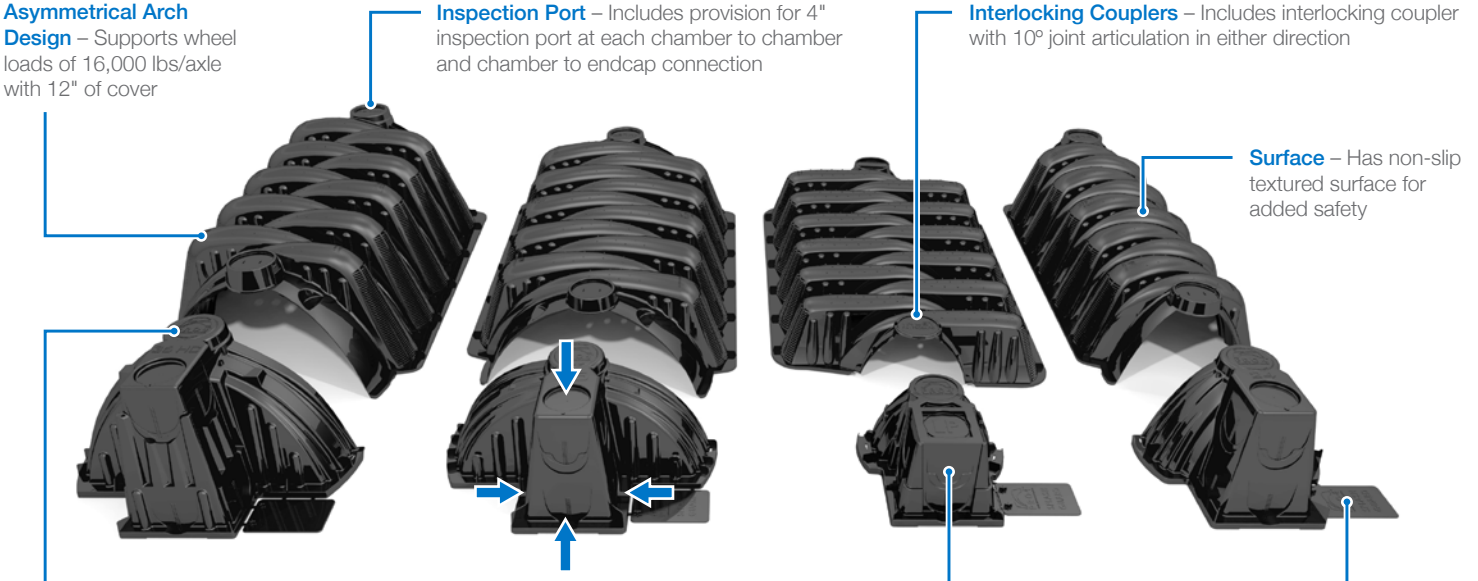
Surface – Has non-slip textured surface for added safety

Interlocking Endcap – Includes interlocking feature for endcap to chamber connection

Flexible Inletting – Supports multiple gravity, front, side, and top inletting elevations

Pressure Dosing – Accommodates 1¼" – 2" diameter pipe installed at-grade or suspended

Splash Guard – Integral snap and set splash guard



Flexibility – Designed for use in trench and bed applications

Lightweight and easy field manipulation saves time, labor, and allows for the use of smaller equipment

Certified – Certified to meet the International Association of Plumbing and Mechanical Officials (IAPMO) standards

Material – Made with high-performance polymers

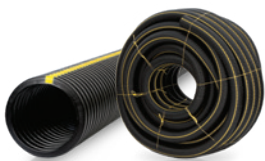
Injection Molding – Manufactured with the latest injection molding technology

More about Pro4[®]

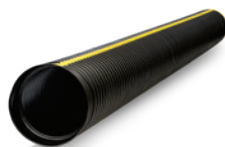
- Installation Videos
- Installation Documents
- Specifications
- Technical Notes



Pro4 onsite chambers are manufactured by Prinsco, a family-owned company that's been in the water management industry for over 45 years. Our products serve the needs of water management contractors and their customers in major markets such as agriculture, stormwater, residential, and now, onsite. Prinsco has a values-driven culture that makes us a leader in customer service and strong relationships, something that sets us apart from the competition in every market we serve.



GOLDLINE[®]
SINGLE-WALL



GOLDFLO[®]
DUAL-WALL STICKS



PRO4[®]
ONSITE CHAMBERS



FITTINGS



SUMP DRAINAGE